

Engineering Specification

Job Name \_\_\_\_\_

Job Location \_\_\_\_\_

Engineer \_\_\_\_\_

Approval \_\_\_\_\_

Contractor \_\_\_\_\_

Approval \_\_\_\_\_

Contractor's P.O. No. \_\_\_\_\_

Representative \_\_\_\_\_

CO-1200-RX

Floor Cleanout with Extra Heavy Duty Round Stainless Steel Top

Specification

Watts CO-1200-RX coated cast iron floor cleanout with 5" round adjustable gasketed extra heavy duty stainless steel top, removable gas tight gasketed brass cleanout plug, and no hub (standard) outlet.



Call customer service if you need assistance with technical details.

Pipe Sizing	
Suffix	Description
2	2" Pipe Size
3	3" Pipe Size
4	4" Pipe Size

Optional Body Material	
Suffix	Description
-28	304 SS Body w/Plug
-60	PVC Body w/Poly Plug
-61	ABS Body w/Poly Plug

Outlet Type	
Suffix	Description
NH	No Hub (MJ)
P	Push On
X	Inside Caulk

Options	
Suffix	Description
-C	Membrane Clamp
-6	Vandal Proof
-13	Galvanized Body
-28	304 SS Body & Plug

Load Rating
XHD

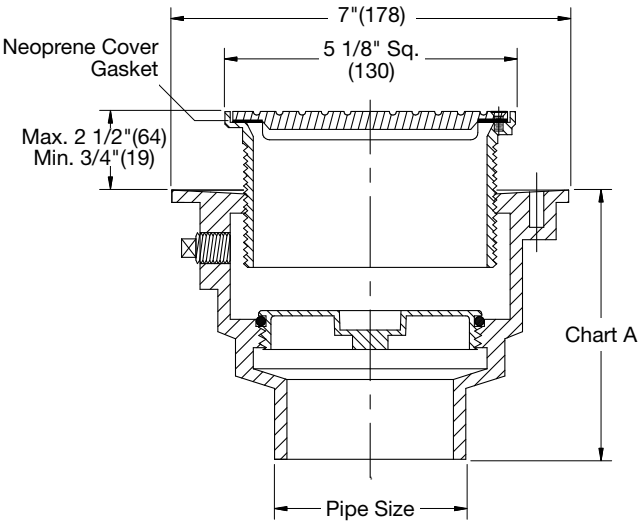


Chart A			
Pipe Size	NH No Hub (MJ)	P Push On	60/61 PVC/ABS
2"(51)	4 1/2"(114)	5 1/2"(140)	4"(102)
3"(76)	4 1/2"(114)	5 1/2"(140)	4"(102)
4"(102)	4 3/4"(121)	5 1/2"(140)	4"(102)

NOTICE

The information contained herein is not intended to replace the full product installation and safety information available or the experience of a trained product installer. You are required to thoroughly read all installation instructions and product safety information before beginning the installation of this product.

NOTICE

The load classifications are in accordance with the American National Standards ASME A112.21.1M ASME Ratings are as follows:  
XHD - Safe Live Load 7500-10,000 lbs. (3375-4500 kg)  
The above categories are given as a guide only.  
Please consult factory.

Watts product specifications in U.S. customary units and metric are approximate and are provided for reference only. For precise measurements, please contact Watts Technical Service. Watts reserves the right to change or modify product design, construction, specifications, or materials without prior notice and without incurring any obligation to make such changes and modifications on Watts products previously or subsequently sold.



USA: T: (800) 338-2581 • Watts.com  
Canada: T: (888) 208-8927 • Watts.ca  
Latin America: T: (52) 55-4122-0138 • Watts.com