

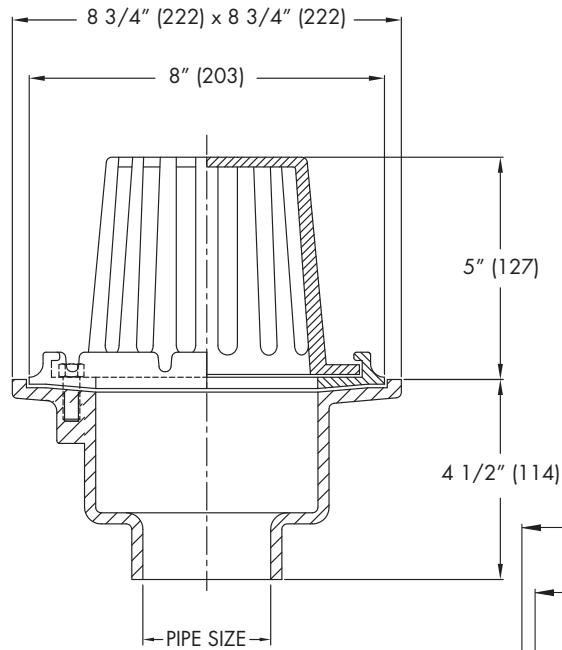


Tag: **RD28**

## Cast Iron Flanged Roof Drain

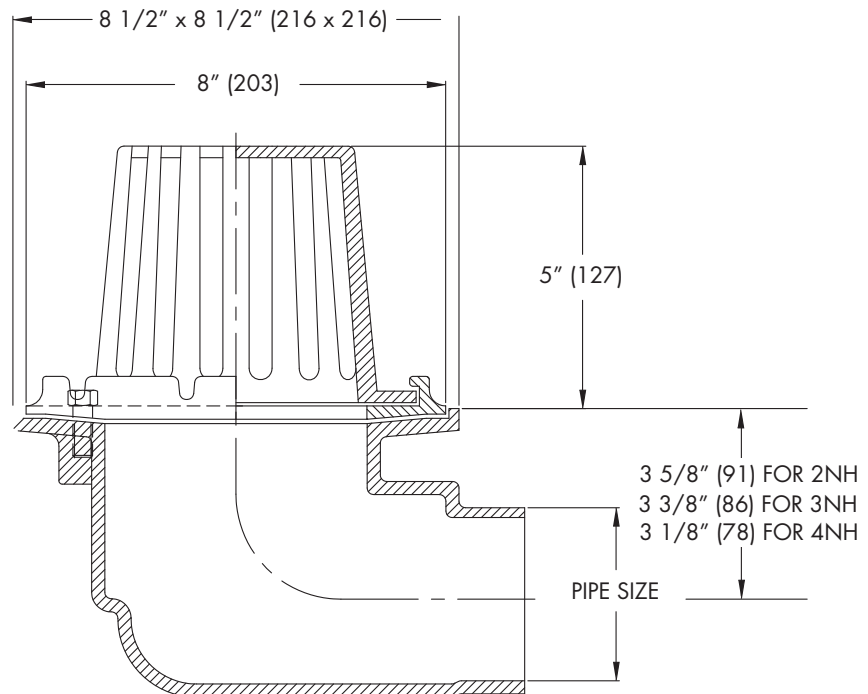
### PROLINE

**SPECIFICATION:** Watts ProLine RD28 cast iron roof drain with integral deck flange, secured cast iron dome, and bottom or side outlet.



Pipe Sizing (Select One)		
Suffix	Description	
-2NH	2"(51) NoHub	<input type="checkbox"/>
-3NH	3"(76) NoHub	<input type="checkbox"/>
-4NH	4"(102) No Hub	<input type="checkbox"/>

Options (Select One or More)		
	Description	
-SO	Side Outlet	<input type="checkbox"/>
-VP	Vandal Proof Screws	<input type="checkbox"/>



Job Name \_\_\_\_\_ Contractor \_\_\_\_\_

Job Location \_\_\_\_\_ Contractor's P.O. No. \_\_\_\_\_

Engineer \_\_\_\_\_ Representative \_\_\_\_\_

WATTS Drainage reserves the right to modify or change product design or construction without prior notice and without incurring any obligation to make similar changes and modifications to products previously or subsequently sold. See your WATTS Drainage representative for any clarification. Dimensions are subject to manufacturing tolerances.



**Specification Drainage Products**

USA: 100 Watts Road, Spindale, NC, 28160-2298; TEL: 828-288-2179 TOLL-FREE: 1-800-338-2581 [www.watts.com](http://www.watts.com)  
Canada: 5435 North Service Rd., Burlington, ONT. L7L 5H7; [www.wattscanada.ca](http://www.wattscanada.ca)