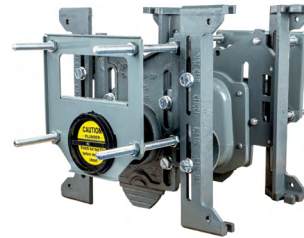


# Engineering Specification

Job Name \_\_\_\_\_  
 Job Location \_\_\_\_\_  
 Engineer \_\_\_\_\_  
 Approval \_\_\_\_\_

Contractor \_\_\_\_\_  
 Approval \_\_\_\_\_  
 Contractor's P.O. No. \_\_\_\_\_  
 Representative \_\_\_\_\_

## QT-101-D QT QuickTurn™ Back-to-Back Horizontal Adjustable Closet Carrier



### Specification

Watts QT-101-D back-to-back horizontal adjustable water closet carrier with epoxy coated cast iron fitting, 4" no hub waste and 2" no hub vent connections, epoxy coated cast iron patented faceplate assembly, and epoxy coated cast iron foot supports with incremental height markings. Adjustable for standard and wheelchair height, adjustable ABS nipple with integral test cap and neoprene bowl gasket, plated hardware and chrome cap nuts. Carrier complies with requirements of ASME A112.6.1M up to a 500 lb. static load.

Call customer service if you need assistance with technical details.

| Options       |  |
|---------------|--|
| Suffix        | Description                                  |
| -3            | 3" No Hub Fitting                            |
| -36           | 36" Long Barrel Fitting                      |
| -QT-100-EXT   | Aux. Support System w/Extended Nipple        |
| -HS           | Hub & Spigot Connections                     |
| -M1           | ABS 24" Extended Nipple (Not Available w/-T) |
| -CA-N8-50-QT  | 8" Cast Iron Nipple (Not Available w/-T)     |
| -CA-N24-50-QT | 24" Cast Iron Nipple (Not Available w/-T)    |
| -T            | Threaded Nipple (Removes Tiling Plate)       |

### NOTICE

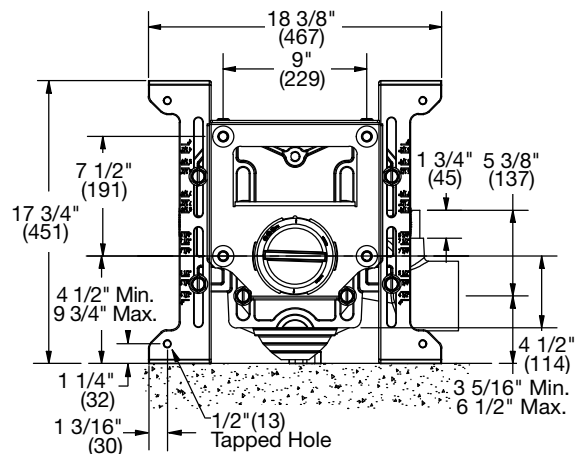
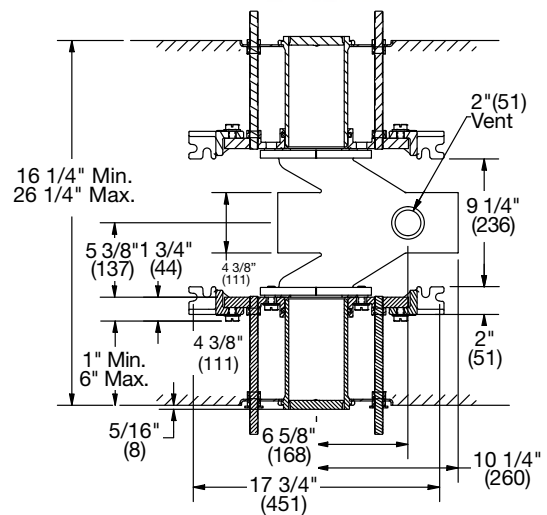
When 3" option is selected, the Min/Max dimensions shrink by 7/8".

Anchor legs to concrete floor with minimum 1/2"(13) anchor bolts (by others).

Carrier feet require one 1/2"(13) anchor bolt per foot.

### NOTICE

The information contained herein is not intended to replace the full product installation and safety information available or the experience of a trained product installer. You are required to thoroughly read all installation instructions and product safety information before beginning the installation of this product.



Watts product specifications in U.S. customary units and metric are approximate and are provided for reference only. For precise measurements, please contact Watts Technical Service. Watts reserves the right to change or modify product design, construction, specifications, or materials without prior notice and without incurring any obligation to make such changes and modifications on Watts products previously or subsequently sold.



USA: T: (800) 338-2581 • Watts.com  
 Canada: T: (888) 208-8927 • Watts.ca  
 Latin America: T: (52) 55-4122-0138 • Watts.com