

Engineering Specification

Job Name _____

Contractor _____

Job Location _____

Approval _____

Engineer _____

Contractor's P.O. No. _____

Approval _____

Representative _____

OI-ST Oil Interceptor with Integral Storage Tank

Specification

Watts OI-ST Series recessed or floor mounted epoxy coated steel oil interceptor with integral storage tank, gasketed epoxy coated steel skid-proof cover secured with hex head center bolt(s), deep seal trap with cleanout, draw-off connection and dual vent connections, sediment bucket, integral stainless steel flow control plate, and no hub (standard) connections.

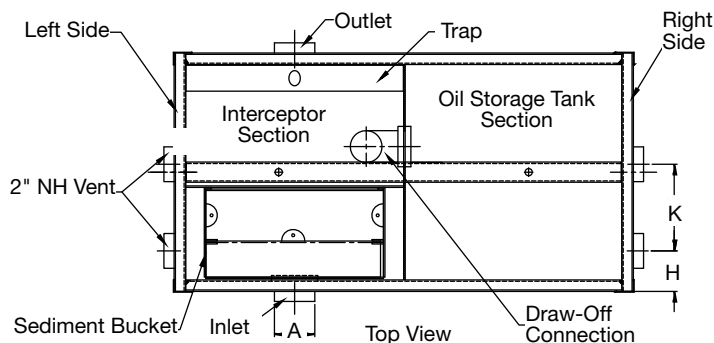


Call customer service if you need assistance with technical details.

Flow Rate	
Suffix	Description
10	10 GPM
15	15 GPM
20	20 GPM
25	25 GPM
35	35 GPM
50	50 GPM
75	75 GPM
100	100 GPM
125	125 GPM
150	150 GPM
200	200 GPM
250	250 GPM
300	300 GPM
350	350 GPM
400	400 GPM
450	450 GPM
500	500 GPM

Options	
Suffix	Description
-E	Extension
-HD	Heavy Duty (10,000 lb.) Traffic Cover*
-O	Inlet & Outlet
-SS	Stainless Steel
-THD	Threaded Connections

*HD Option Requires Minimum 3" Extension



*Note: See next page for Elevation, Side View & Dimensional Chart

NOTICE

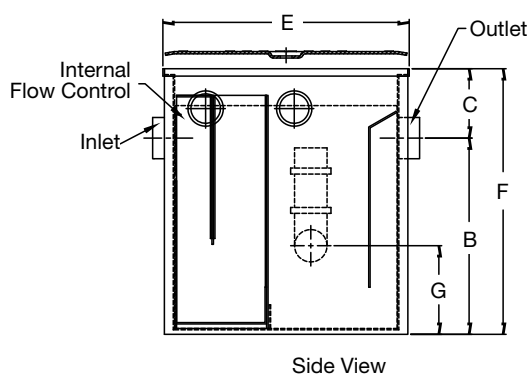
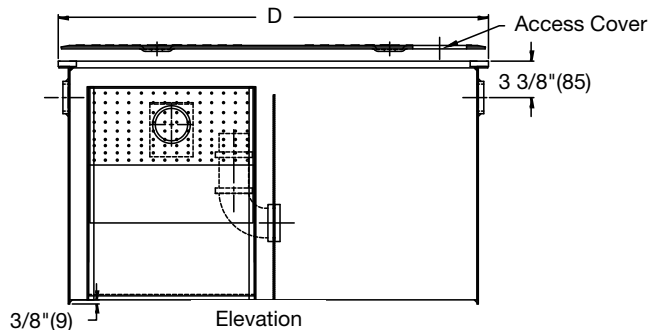
The information contained herein is not intended to replace the full product installation and safety information available or the experience of a trained product installer. You are required to thoroughly read all installation instructions and product safety information before beginning the installation of this product.

NOTICE

Check local plumbing code for oil storage requirements prior to installation.

Watts product specifications in U.S. customary units and metric are approximate and are provided for reference only. For precise measurements, please contact Watts Technical Service. Watts reserves the right to change or modify product design, construction, specifications, or materials without prior notice and without incurring any obligation to make such changes and modifications on Watts products previously or subsequently sold.





Model No.	Rate GPM	Tank Oil Capacity USG	Combined Volume USG	A Inlet & Outlet	B Base to Center	C Top to Center	D Length	E Width	F Height	G	H	K	J
OI-10-ST	10	5	9	2"(51)	8 1/2"(216)	6"(152)	24"(610)	18"(457)	14 1/2"(368)	3"(76)	4 1/2"(114)	5 1/2"(140)	6"(152)
OI-15-ST	15	14	26	2"(51)	12 1/2"(318)	6"(152)	33 3/4"(857)	20 7/8"(530)	18 1/2"(470)	5"(127)	4 1/2"(114)	7 1/2"(191)	9"(229)
OI-20-ST	20	19	34	3"(76)	14 1/2"(368)	6"(152)	39 3/4"(1010)	20 7/8"(530)	20 1/2"(521)	6"(152)	4 1/2"(114)	7 1/2"(191)	10 1/2"(265)
OI-25-ST	25	22	40	3"(76)	16 1/2"(419)	6"(152)	39 3/4"(1010)	20 7/8"(530)	22 1/2"(572)	7"(178)	4 1/2"(114)	7 1/2"(191)	10 1/2"(265)
OI-35-ST	35	39	65	4"(102)	14 1/2"(368)	6"(152)	49 3/4"(1264)	32 7/8"(835)	20 1/2"(521)	6"(152)	12"(305)	6"(152)	13"(329)
OI-50-ST	50	51	90	4"(102)	18 1/2"(470)	6"(152)	49 3/4"(1264)	32 7/8"(835)	24 1/2"(622)	8"(203)	12"(305)	6"(152)	13"(329)
OI-75-ST	75	96	176	4"(102)	26 1/2"(673)	6"(152)	49 3/4"(1264)	40 7/8"(1038)	32 1/2"(826)	16"(406)	12"(305)	12"(305)	13"(329)
OI-100-ST	100	185	337	4"(102)	24"(610)	10"(254)	72"(1829)	54"(1372)	34"(864)	17 1/2"(445)	20"(508)	13"(330)	22 1/2"(572)
OI-150-ST	150	266	494	4"(102)	29"(737)	10"(254)	76"(1930)	60"(1524)	39"(991)	22 1/2"(572)	22"(559)	15"(381)	19"(483)
OI-200-ST	200	372	694	4"(102)	31"(787)	10"(254)	86"(2184)	69"(1735)	41"(1041)	24 1/2"(622)	26"(660)	18"(457)	22 1/2"(572)
OI-250-ST	250	505	951	4"(102)	37"(940)	10"(254)	90"(2286)	74"(1880)	47"(1194)	30"(762)	26"(660)	20"(508)	22 1/2"(572)
OI-300-ST	300	553	1011	6"(152)	38"(965)	10"(254)	96"(2438)	76"(1930)	48"(1219)	30 1/2"(775)	27"(686)	20"(508)	21 1/2"(546)
OI-350-ST	350	616	1129	6"(152)	39"(991)	10"(254)	100"(2540)	79"(2007)	49"(1245)	31 1/2"(800)	28"(711)	21"(533)	23 1/2"(597)
OI-400-ST	400	771	1423	6"(152)	42"(1067)	10"(254)	110"(2794)	83"(2108)	52"(1321)	34 1/2"(876)	30"(762)	23"(584)	22 3/4"(578)
OI-500-ST	500	1182	2222	6"(152)	53"(1346)	10"(254)	120"(3048)	91"(2311)	63"(1600)	45 1/2"(1156)	32"(815)	25"(635)	20 3/4"(527)



USA: T: (800) 338-2581 • Watts.com
 Canada: T: (888) 208-8927 • Watts.ca
 Latin America: T: (52) 55-4122-0138 • Watts.com

