

Engineering Specification

Job Name _____

Contractor _____

Job Location _____

Approval _____

Engineer _____

Contractor's P.O. No. _____

Approval _____

Representative _____

Series TP300

Trap Primer

Size: 1/2"

The Series LFTP300 is an automatic pressure drop activated trap primer valve will prime up to 2 floor drains with our TP300-DU distribution unit. System operating range is 20 psi minimum to 80 psi (1.38 to 5.50 bar) maximum. The valve requires a 10 psi (0.69 bar) pressure drop across the valve to activate and will deliver a metered amount of water to the floor drain. The Watts Trap primer is designed to be installed on 1/2" to 1 1/2" cold water supply line, feeding a flush valve or other open and closing valve supply line that is frequently used.

Options

- LFTP300T Threaded Connections
- LFTP300S Union Solder Ends
- TP300-DU Distribution Unit

Features

- Built in vacuum breaker

Specifications

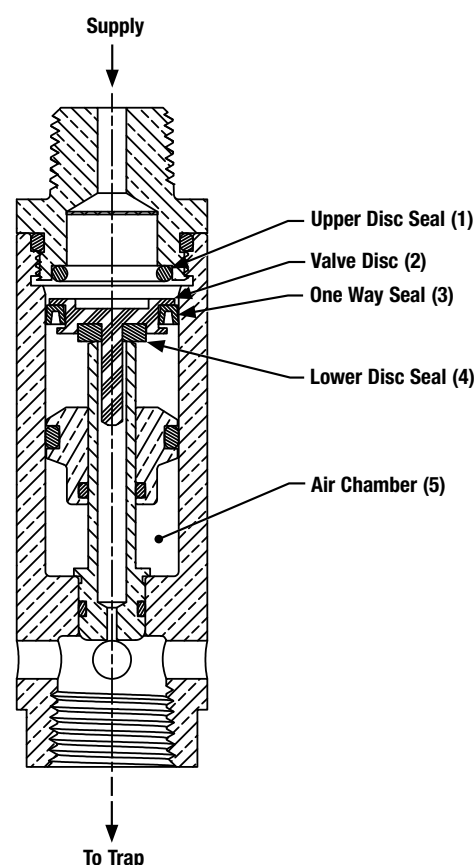
A trap primer shall be installed in plumbing systems to prevent floor drain traps from losing their water seal by evaporation. Maintaining the water seal will prevent the backflow of sewer gas into the buildings or rooms where the traps are installed. Trap primers are specified in various plumbing codes such as IAPMO, Southern Standard Building Code, National Standard Plumbing Code and many state and local plumbing codes in U.S.A. and Canada. The device shall meet the requirements of ASSE Standard 1018. Watts Series LFTP300T (threaded), or LFTP300S (solder).



Model LFTP300T



Model TP300 -DU



NOTICE

The information contained herein is not intended to replace the full product installation and safety information available or the experience of a trained product installer. You are required to thoroughly read all installation instructions and product safety information before beginning the installation of this product.

Watts product specifications in U.S. customary units and metric are approximate and are provided for reference only. For precise measurements, please contact Watts Technical Service. Watts reserves the right to change or modify product design, construction, specifications, or materials without prior notice and without incurring any obligation to make such changes and modifications on Watts products previously or subsequently sold.



Materials

Constructed of lead free* brass,
EPDM E70 O-rings,
Dow #7 Silicone

Pressure

Maximum supply pressure: 80 psi (5.50 bar).
Minimum supply pressure must exceed 20 psi (1.38 bar).

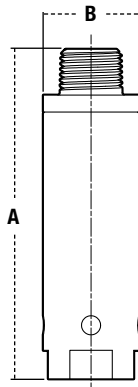
Standards



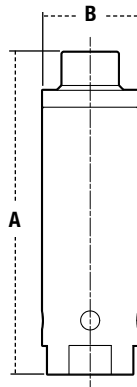
Tested and approved in conformance with Standard 1018 of the American Society of Sanitary Engineers. Listed by IAPMO.

Dimensions – Weights

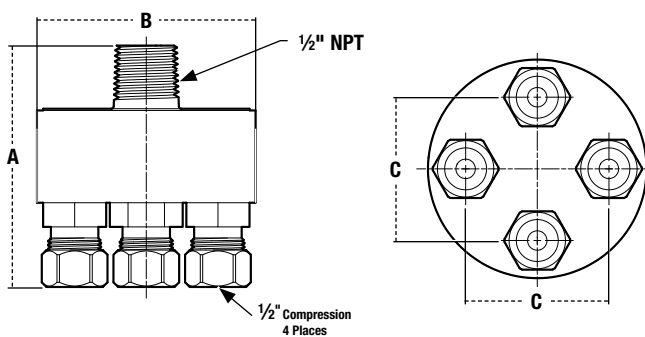
Model LFTP300T



Model LFTP300S



Model TP300-DU



| MODEL | SIZE | DIMENSIONS | | | | | | WEIGHT | |
|----------|------|------------|-----|--------|----|-------|----|--------|------|
| | | A | | B | | C | | lbs. | kgs. |
| | in. | in. | mm | in. | mm | in. | mm | | |
| LFTP300T | 1/2 | 4 5/16 | 110 | 1 1/4 | 32 | — | — | 1.0 | .45 |
| LFTP300S | 1/2 | 4 1/4 | 107 | 1 1/4 | 32 | — | — | .92 | .42 |
| TP300-DU | 1/2 | 3 3/8 | 79 | 2 3/16 | 71 | 1 7/8 | 47 | .74 | .34 |

Typical Installation

