

**For Residential and Commercial Applications**

Job Name \_\_\_\_\_  
 Job Location \_\_\_\_\_  
 Engineer \_\_\_\_\_  
 Approval \_\_\_\_\_

Contractor \_\_\_\_\_  
 Approval \_\_\_\_\_  
 Contractor's P.O. No. \_\_\_\_\_  
 Representative \_\_\_\_\_

# Series 3003

## Dielectric Unions

**Sizes: 1/2" – 2" (15 – 50mm)**

Series 3003 Dielectric Unions feature a female iron pipe thread to female brass pipe thread connections. These unions are designed to be installed between pipe made from dissimilar metals to prevent accelerated corrosion and deterioration in the piping system due to galvanic and stray current.

### Features

- Female iron pipe thread to female brass pipe threaded connections
- Designed and manufactured to the highest quality standards
- Individually factory certified to withstand a minimum of 600 volts on a dry line with no flashover
- Rated to 180°F (82°C) at 250psi (17.2 bar)

### Specifications

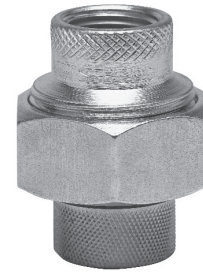
A dielectric union shall be installed where indicated on the plans. The union shall feature a female iron pipe thread to female brass pipe threaded connections. The union shall be a Watts Regulator Company Series 3003.

### Materials

Gray Iron	ASTM A48-83
Malleable Iron Parts	ASTM A-197-79
Steel Parts	ASTM A108
Brass Parts	ASTM B-16
Bronze Parts	ASTM B-584
Zinc Parts	ASTM B633-85
Standard Gasket A	Buna-N
Optional Gasket B	EPDM

### Options

GB - Optional EPDM gasket for use in steam or hot water applications up to 300°F (149°C) at 50psi (3.4 bar).



**3003**

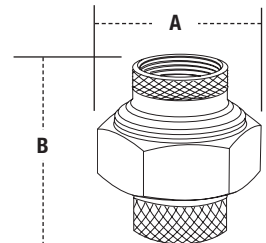
### Standards

Meets federal specifications for tensile strength and thread end connections

### Pressure – Temperature

Maximum Pressure: 250psi (17.2 bar)  
 Maximum Temperature: 180°F (82°C)

### Dimensions – Weights



SIZE (DN)		DIMENSIONS				WEIGHT	
		A		B			
in.	mm	in.	mm	in.	mm	oz.	gm.
1/2	15	1 5/8	41	2 1/4	57	6.7	190
3/4	20	1 7/8	48	2 1/4	57	14.7	417
1	25	2 1/4	57	2 1/2	64	20	567
1 1/4	32	2 3/4	70	2 3/4	70	26.7	757
1 1/2	40	3 1/2	89	2 3/4	70	48	136
2	50	4 1/8	105	3 1/8	79	69.3	1965

Watts product specifications in U.S. customary units and metric are approximate and are provided for reference only. For precise measurements, please contact Watts Technical Service. Watts reserves the right to change or modify product design, construction, specifications, or materials without prior notice and without incurring any obligation to make such changes and modifications on Watts products previously or subsequently sold.



**USA:** 815 Chestnut St., No. Andover, MA 01845-6098; [www.watts.com](http://www.watts.com)  
**Canada:** 5435 North Service Rd., Burlington, ONT. L7L 5H7; [www.wattscanada.ca](http://www.wattscanada.ca)



**Water Safety & Flow Control Products**