

## For Float & Thermostatic Steam Trap Repair

Job Name \_\_\_\_\_

Contractor \_\_\_\_\_

Job Location \_\_\_\_\_

Approval \_\_\_\_\_

Engineer \_\_\_\_\_

Contractor's P.O. No. \_\_\_\_\_

Approval \_\_\_\_\_

Representative \_\_\_\_\_

# Series WFTC, WFTK

## Float & Thermostatic Steam Trap Cover Assemblies & Repair Kits

Sizes: 3/4" – 2" (20 – 50mm)

Series WFTC, WFTK Float & Thermostatic Steam Trap Cover Assemblies & Repair Kits are designed for use on Watts and select Spirax-Sarco F&T steam traps.

### Features

- Quick, easy and economical trap maintenance
- Simplifies and standardizes inventory
- All stainless steel corrosion resistant internal parts

### Models

#### WFTC

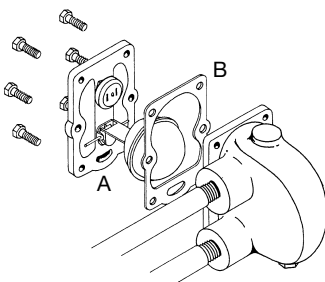
Cover assembly consists of a complete factory assembled unit which simply bolts on for ease of repair. No pipe connections need to be broken. There will be no reduction in the original trap's capacity.

#### WFTK

Designed for large traps that have piping connections into the cover plate. To avoid the "breaking" of piping connections, these kits are installed by removing the trap body. Each complete kit contains the thermostatic air vent, float, linkage, valve, seat and body gasket. These kits were designed to assure ease of installation.

#### WFTC

Series WFTC cover assemblies include the cast iron cover, condensate valve assembly, float and linkage, thermostatic vent in one factory assembled unit (A) and cover gasket (B).



WFTC



WFTK

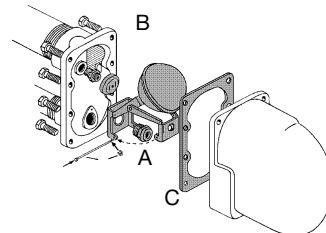
### Dimensions – Weights

MODEL	MANUFACTURERS		LINE SIZE		WEIGHT	
	Model	Trap	in.	mm	lbs.	kgs.
3/4-WFTC-15	Spirax-Sarco	FT-15	3/4	20	3.0	6.6
3/4-WFTC-30	Spirax-Sarco	FT-30	3/4	20	3.0	6.6
1-WFTC-15	Spirax-Sarco	FT-15	1	25	3.0	6.6
1-WFTC-30	Spirax-Sarco	FT-30	1	25	3.0	6.6
1 1/4-WFTC-15	Spirax-Sarco	FT-15	1 1/4	32	3.0	6.6
1 1/4-WFTC-30	Spirax-Sarco	FT-30	1 1/4	32	3.0	6.6
1 1/2-WFTK-15	Spirax-Sarco	FT-15	1 1/2	40	1.5	3.3
1 1/2-WFTK-30	Spirax-Sarco	FT-30	1 1/2	40	1.5	3.3
2-WFTK-15	Spirax-Sarco	FT-15	2	50	1.5	3.3
2-WFTK-30	Spirax-Sarco	FT-30	2	50	1.5	3.3

For models of 75 or 125psi, please contact your Watts Representative for ordering information.

#### WFTK

Series WFTK repair kits include condensate valve assembly - float and linkage (A), thermostatic vent and seat (B), and cover gasket (C).



### NOTICE

The information contained herein is not intended to replace the full product installation and safety information available or the experience of a trained product installer. You are required to thoroughly read all installation instructions and product safety information before beginning the installation of this product.

Watts product specifications in U.S. customary units and metric are approximate and are provided for reference only. For precise measurements, please contact Watts Technical Service. Watts reserves the right to change or modify product design, construction, specifications, or materials without prior notice and without incurring any obligation to make such changes and modifications on Watts products previously or subsequently sold.

USA: T: (978) 689-6066 • F: (978) 975-8350 • Watts.com

Canada: T: (905) 332-4090 • F: (905) 332-7068 • Watts.ca

Latin America: T: (52) 81-1001-8600 • Watts.com

ES-WFTC/WFTK 0408

© 2004 Watts