

For Residential and Commercial Applications

Job Name _____

Contractor _____

Job Location _____

Approval _____

Engineer _____

Contractor's P.O. No. _____

Approval _____

Representative _____

LEAD FREE*

Lead Free* Brass CrimpRing™ Adapters

Lead Free* Brass CrimpRing™ Sweat Adapters are used to transition copper pipe to WaterPEX® supply lines. Threaded Adapters are used for the appropriate NPT fitting. The LF Brass CrimpRing™ Adapters feature Lead Free* construction to comply with Lead Free* installation requirements.

Specifications

System shall be plumbed using Watts cross-linked polyethylene pipe. All joints shall be made using Watts Lead Free* brass CrimpRing™ and/or Poly-alloy CrimpRing™ adapters using either the Watts copper CrimpRing™ or stainless steel CinchClamp™ crimping methods as outlined in the Watts Installation Guidelines. The Lead Free* Brass CrimpRing™ Adapters shall be constructed using Lead Free* brass and shall comply with state codes and standards, where applicable, requiring reduced lead content.

Installation Note

Lead Free* Brass CrimpRing™ Adapters must be installed in accordance with all Watts installation procedures, including information provided in installation manual and guidelines.

All crimp connections must be checked with a GO/NO GO Gauge provided by the tool manufacturer.

Approvals



- Manufactured in accordance with American Society for Testing and Materials (ASTM International) F877 and F1807
- Listed by the NSF International to NSF Standards 14 and 61 for use in potable water systems
- Listed by NSF International to be in compliant to the Uniform Plumbing Code
- Labeled B137.5 which indicates that it is compliant to the CSA Standards B137.5



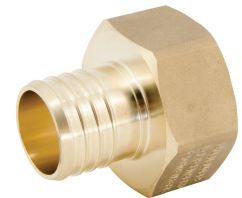
LFWP10
Male Sweat x Crimp
Adapter



LFWP11
Female Sweat x Crimp
Adapter



LFWP12
Crimp x MPT Threaded
Adapter



LFWP13
Crimp x FPT Threaded
Adapter

WARNING

If connections must be made in temperatures below 30°F (-1°C), caution must be taken to allow the WaterPEX pipe to form a proper seal against the fitting barb. Apply the connection slowly to ensure the PEX material conforms to the barb.

NOTICE

Watts CinchClamps™ should not be used with wrought copper PEX fittings.

*The wetted surface of this product contacted by consumable water contains less than 0.25% of lead by weight.

Watts product specifications in U.S. customary units and metric are approximate and are provided for reference only. For precise measurements, please contact Watts Technical Service. Watts reserves the right to change or modify product design, construction, specifications, or materials without prior notice and without incurring any obligation to make such changes and modifications on Watts products previously or subsequently sold.

Dimensions – Weights

MODEL	INLET			OUTLET			PKG. WEIGHT	
	<i>in.</i>	<i>mm</i>	<i>type</i>	<i>in.</i>	<i>mm</i>	<i>type</i>	<i>lbs.</i>	<i>kgs.</i>
CrimpRing™ Lead Free* Sweat Adapters — Male x Crimp								
LFWP10B-0806PB	½	15	Male Sweat	⅜	10	Crimp Fitting	1	0.5
LFWP10B-0808PB	½	15	Male Sweat	½	15	Crimp Fitting	1	0.5
🔥 LFWP10B-1212PB	¾	20	Male Sweat	¾	20	Crimp Fitting	1	0.5
🔥 LFWP10B-1616PB	1	25	Male Sweat	1	25	Crimp Fitting	2	0.9
LFWP10B-1620PB	1	25	Male Sweat	1¼	32	Crimp Fitting	3	1.4
CrimpRing™ Lead Free* Sweat Adapters — Female x Crimp								
LFWP11B-0808PB	½	15	Female Sweat	½	15	Crimp Fitting	1	0.5
🔥 LFWP11B-1212PB	¾	20	Female Sweat	¾	20	Crimp Fitting	2	0.9
🔥 LFWP11B-1616PB	1	25	Female Sweat	1	25	Crimp Fitting	3	1.4
LFWP11B-1620PB	1	25	Female Sweat	1¼	32	Crimp Fitting	3	1.4
CrimpRing™ Lead Free* Threaded Adapters — Crimp x Male								
LFWP12B-0608PB	⅜	10	Crimp Fitting	½	15	MPT	1	0.5
LFWP12B-0808PB	½	15	Crimp Fitting	½	15	MPT	1	0.5
LFWP12B-0812PB	½	15	Crimp Fitting	¾	20	MPT	2	0.9
LFWP12B-1208PB	¾	20	Crimp Fitting	½	15	MPT	1	0.5
🔥 LFWP12B-1212PB	¾	20	Crimp Fitting	¾	20	MPT	2	0.9
🔥 LFWP12B-1216PB	¾	20	Crimp Fitting	1	25	MPT	3	1.4
🔥 LFWP12B-1612PB	1	25	Crimp Fitting	¾	20	MPT	3	1.4
🔥 LFWP12B-1616PB	1	25	Crimp Fitting	1	25	MPT	3	1.4
CrimpRing™ Lead Free* Threaded Adapters — Crimp x Female								
LFWP13B-0808PB	½	15	Crimp Fitting	½	15	FPT	1	0.5
LFWP13B-1212PB	¾	20	Crimp Fitting	¾	20	FPT	2	0.9
🔥 LFWP13B-1616PB	¾	26	Crimp Fitting	1	25	FPT	3	1.4

🔥 This product is UL 1821 listed for PEX multipurpose systems used to support NFPA 13D when used with Watts (Residential Fire) RF PEX™ Tubing, RF PEX™ Fittings, RF PEX™ Sprinkler Fittings and Copper CrimpRings™. You must refer to Watts Residential Fire at watts.com/resfire for further product specification and safety information. **DO NOT USE OTHER PRODUCTS WITHOUT SUCH DESIGNATION IN FIRE PROTECTION APPLICATIONS.**



USA: T: (978) 689-6066 • Watts.com
 Canada: T: (888) 208-8927 • Watts.ca
 Latin America: T: (52) 55-4122-0138 • Watts.com