

Making RadiantPEX-AL Press Fitting Connections

Product Overview

Press fittings are designed to be used with RadiantPEX-AL in radiant heating and snowmelting applications. The fittings are compatible with water and water/glycol solutions. No other tubing type may be used.

Fittings are available in a variety of Press x Sweat, Press x NPT or Press x BSP connections.

Warnings:

- **When using sweat fittings, ensure that all O-rings and insulator bases are removed prior to soldering.**
- **If connections must be made in temperatures lower than 30°F (0°C), caution must be taken to allow for a proper seal.**

The Connection

Step 1:

Cut a clean, square end to the tubing.

Step 2:

Use the Reamer tool to shape and prep the tubing.

Step 3:

Make sure the insulator base is in place at the base of the fitting.

Step 4:

Make sure the Press sleeve is seated against the insulator base of the connection.

Step 5:

Slide the RadiantPEX-AL tubing onto the fitting until the tubing is visible through the view port.

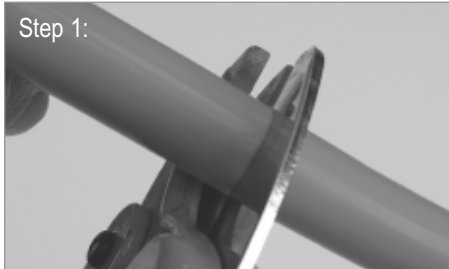
Step 6:

Place the Press fitting into one side of the jaws.

Step 7:

Close the jaws firmly. Tool will stop automatically when complete.

Step 1:



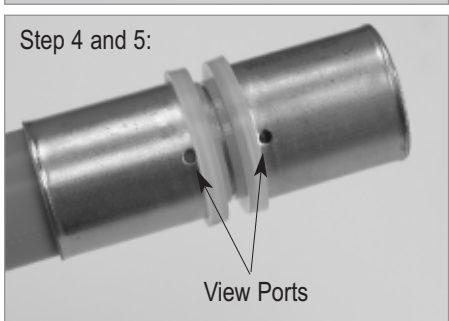
Step 2:



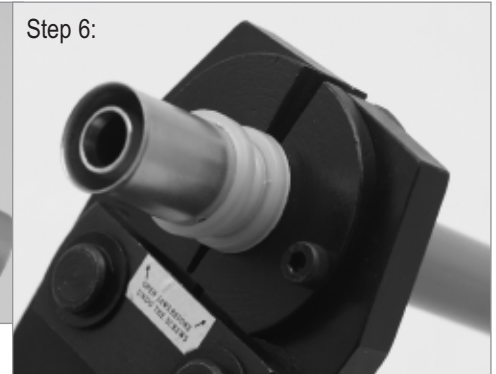
Step 3:



Step 4 and 5:



Step 6:



Step 7:



Making Radiant PEX-AL Compression Connections

Product Overview

Compression fittings are designed to be used with Radiant PEX-AL in radiant heating and snowmelting applications. The fittings are compatible with water and water/glycol solutions. No other tubing type may be used.

Fittings are available in a variety of Compression x Sweat, Compression x NPT or Compression x BSP connections.

Warnings:

- **When using sweat fittings, ensure that all O-rings and insulator bases are removed prior to soldering.**
- **If connections must be made in temperatures lower than 30°F (0°C), caution must be taken to allow for a proper seal.**

Connection Steps

Step 1:

Cut a clean, square end to the tubing.

Step 2:

Use the Reamer tool to shape and prep the tubing.

Step 3:

Slide the compression nut over the tubing.

Step 4:

Slide the compression ring over the tubing.

Step 5:

Make sure the plastic insulator insert is in place at the base of the fitting.

Step 6:

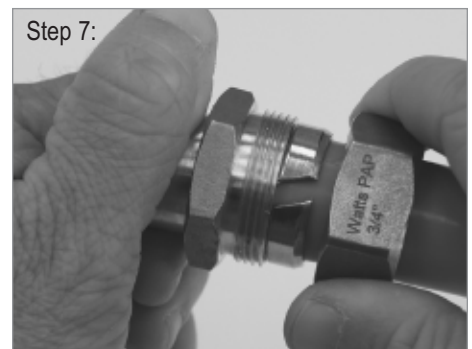
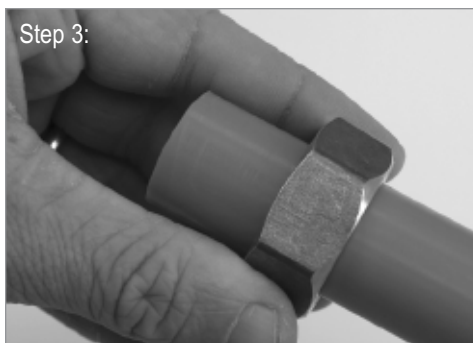
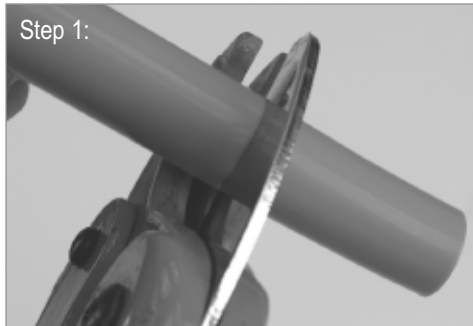
Slide the tubing over the fitting. Make sure the tubing is sealed against the insulator insert of the fitting.

Step 7:

Slide the compression nut up and begin threading it onto the base. The compression ring will automatically be positioned over the fitting.

Step 8:

Use a box-end wrench to complete the connection (Do not use a crescent wrench). Tighten the connection until snug and then an additional 1/4 turn.



In the United States

Watts Radiant, Inc.
4500 Progress Place
Springfield, MO 65803

1-800-276-2419 toll-free
417-864-6108 phone
417-864-8161 fax
www.wattsradiant.com

In Canada

Watts Industries-Canada
5435 North Service Road
Burlington, ON L7L 5H7
1-888-208-8927 toll-free phone
905-332-4090 phone
1-888-882-1979 toll-free fax
905-332-7068 fax
www.wattscanada.ca