

**Engineering Specification**

Job Name \_\_\_\_\_

Contractor \_\_\_\_\_

Job Location \_\_\_\_\_

Approval \_\_\_\_\_

Engineer \_\_\_\_\_

Contractor's P.O. No. \_\_\_\_\_

Approval \_\_\_\_\_

Representative \_\_\_\_\_

**LEAD FREE\***

**Series LFBIV  
Boiler Isolation Valves**

**Sizes: 1"**

Series LFBIV boiler isolation valves are designed to simplify the installation, maintenance and operation of wall-hung and combination water heating & space heating combi boilers. The LFBIV features Lead Free\* construction to comply with Lead Free\* installation requirements.

**Features**

- Lead Free\* copper silicon alloy body
- FPT unions for connection to boiler
- FPT unions for connection to supply and return mains
- Full-port, quarter-turn ball valve with color-coded tee handle and union
- Quarter-turn purge and drain valve with hose connection and tethered brass cap
- Hot and cold valves certified to NSF/ANSI 61
- Valves are suitable for most combi boiler installations
- No additional adapters required
- 600 WOG rated

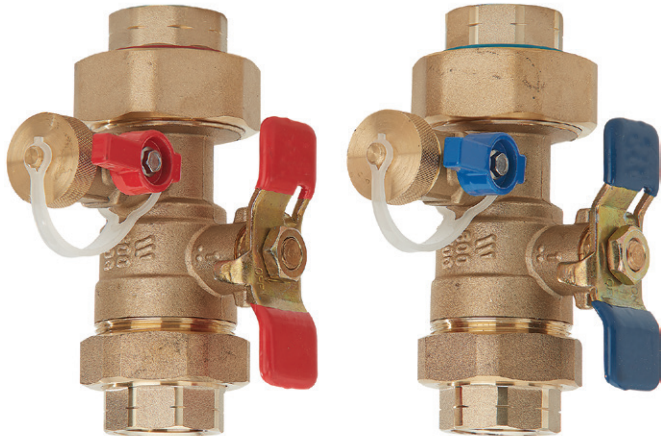
**Materials**

Body: Lead Free\* copper silicon alloy body

Ball: Lead Free\* brass

Seats: Virgin PTFE

**Standards**



LFBIV-UT-HCN

**NOTICE**

The information contained herein is not intended to replace the full product installation and safety information available or the experience of a trained product installer. You are required to thoroughly read all installation instructions and product safety information before beginning the installation of this product.

**NOTICE**

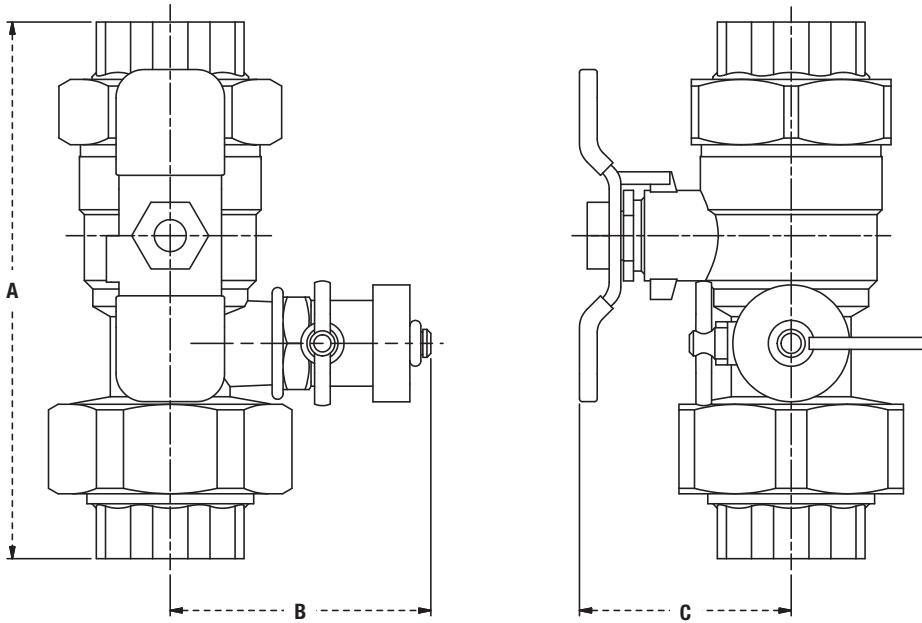
Inquire with governing authorities for local installation requirements

**\*The wetted surface of this product contacted by consumable water contains less than 0.25% of lead by weight.**

Watts product specifications in U.S. customary units and metric are approximate and are provided for reference only. For precise measurements, please contact Watts Technical Service. Watts reserves the right to change or modify product design, construction, specifications, or materials without prior notice and without incurring any obligation to make such changes and modifications on Watts products previously or subsequently sold.



LFBIV-UT Hot (Supply) and Cold (Return) Valves



Dimensions – Weights

SIZE	MODEL	CONNECTIONS	DIMENSIONS										WEIGHT	
			A		B		C		D		E		lbs.	kgs.
<i>in.</i>			<i>in.</i>	<i>mm</i>	<i>in.</i>	<i>mm</i>	<i>in.</i>	<i>mm</i>	<i>in.</i>	<i>mm</i>	<i>in.</i>	<i>mm</i>		
1"	LFBIV-UT-HCN	Union x Union	5 <sup>3</sup> / <sub>8</sub>	137	2 <sup>5</sup> / <sub>8</sub>	66	2 <sup>1</sup> / <sub>8</sub>	54	–	–	–	–	3.0	1.3



USA: T: (978) 689-6066 • F: (978) 975-8350 • Watts.com  
 Canada: T: (888) 208-8927 • F: (905) 481-2316 • Watts.ca  
 Latin America: T: (52) 55-4122-0138 • Watts.com