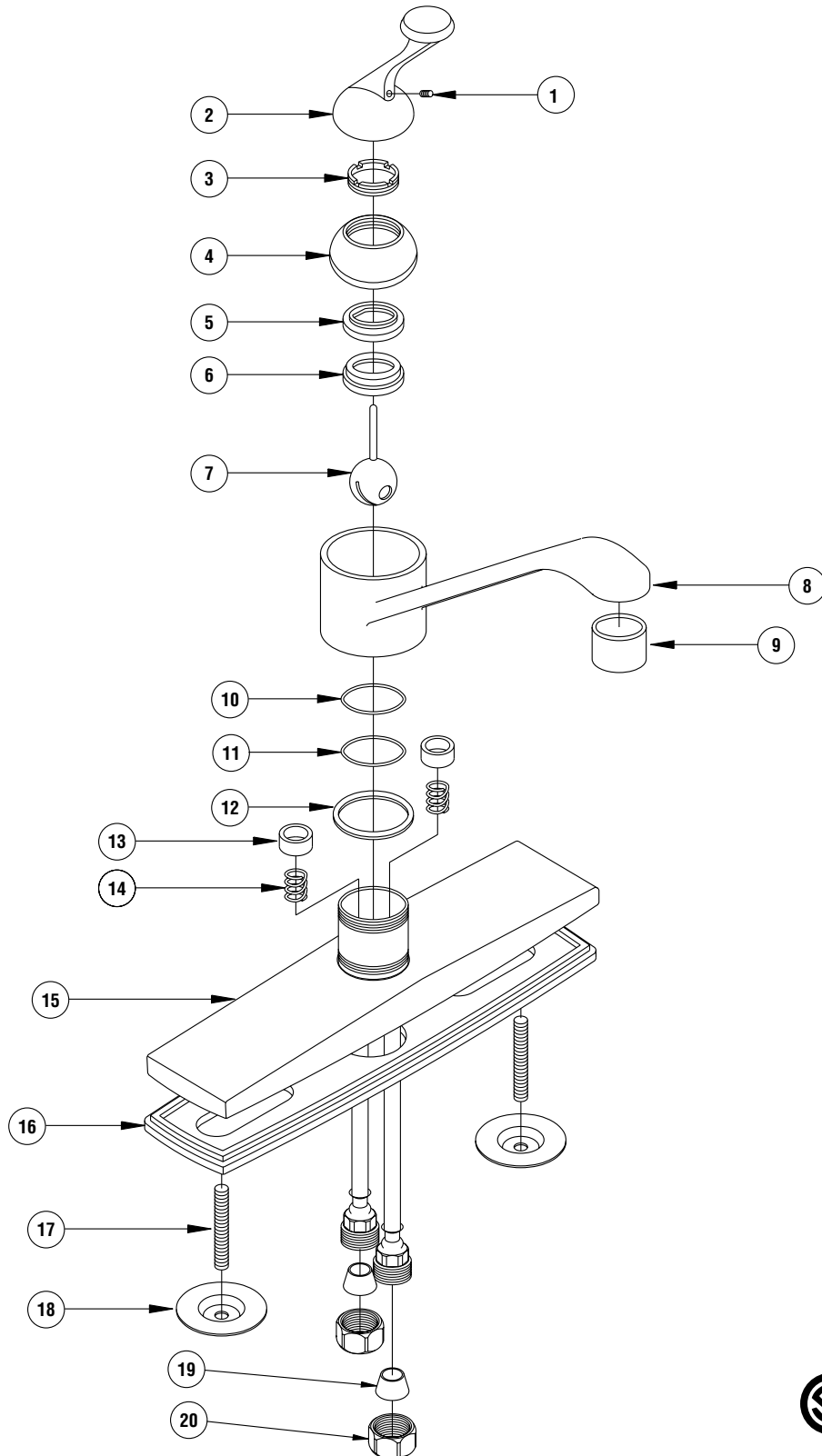


FITTINGS B548



PARTS LIST B548 Single Lever Kitchen Fitting with Lever Handle

ITEM	DESCRIPTION	ORDER CODE	QUANTITY
1	Set Screw	See Kit	—
2	Lever Handle	See Kit	—
3	Adjusting Ring	N/A	—
4	Dome Nut	N/A	—
5	Cam	N/A	—
6	Packing	See Kit	—
7	Stem & Ball	See Kit	—
8	Spout	N/A	—
9	Aerator	300994	1
10	“O”- Ring	See Kit	—
11	“O”- Ring	See Kit	—
12	Washer	N/A	—
13	Seat	See Kit	—
14	Spring	See Kit	—
15	Cover	N/A	—
16	Under Plate	N/A	—
17	Mounting Stud	See Kit	—
18	Nut	See Kit	—
19	Cone Washer	300116	1
20	Coupling Nut	300125	1

REPAIR KITS

DESCRIPTION	ORDER CODE	INCLUDED ITEMS AND QUANTITY
Handle Kit	039576	1, 2 (Qty: 1 each)
Cartridge Kit	039580	6, 7 (Qty: 1 each) 13, 14 (Qty: 2 each)
Mounting Kit	039578	17, 18 (Qty: 2 each)
“O”- Ring Kit	039583	10, 11 (Qty: 1 each)

CALIFORNIA PROPOSITION 65 WARNING

WARNING: This product contains chemicals known to the State of California to cause cancer and birth defects or other reproductive harm. (California law requires this warning to be given to customers in the State of California.) For more information: www.wattsind.com/prop65

POWERS™
a division of Watts Water Technologies, Inc.

© 2005 Powers, a division of Watts Water Technologies, Inc.
USA Phone: 1.800.669.5430 • Fax 1.847.824.0627
Canada Phone: 1.888.208.8927 • Fax 1.888.882.1979
www.powerscontrols.com