

Engineering Specification

Job Name _____
 Job Location _____
 Engineer _____
 Approval _____
 Tag _____

Contractor _____
 Approval _____
 Contractor's P.O. No. _____
 Representative _____

QT Carrier Trim Kits

QT-CFP-5.5-KIT

QT-CFP-7.5-KIT

Specification

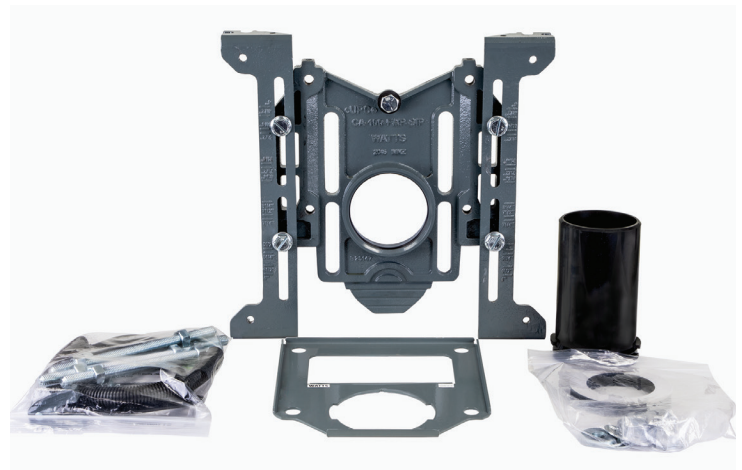
Watts QT carrier trim kits contain everything needed for quick assembly to the fixture of choice. These kits can be used on any standard QT QuickTurn™ carrier model with the exception of 750 lb. and 1,000 lb. systems.

Model QT-CFP-5.5-KIT (8200883) includes faceplate with pre-assembled legs to standard rough-in height of 5-1/2 inches, ABS nipple, tile plate, bowl and fitting gaskets, threaded rods, hardware and installation instructions.

Model QT-CFP-7.5-KIT (8200881) includes faceplate with pre-assembled legs to ADA rough-in height of 7-1/2 inches, ABS nipple, tile plate, bowl and fitting gaskets, threaded rods, hardware and installation instructions.



QT-CFP-5.5-KIT



QT-CFP-7.5-KIT

NOTICE

The information contained herein is not intended to replace the full product installation and safety information available or the experience of a trained product installer. You are required to thoroughly read all installation instructions and product safety information before beginning the installation of this product.

Watts product specifications in U.S. customary units and metric are approximate and are provided for reference only. For precise measurements, please contact Watts Technical Service. Watts reserves the right to change or modify product design, construction, specifications, or materials without prior notice and without incurring any obligation to make such changes and modifications on Watts products previously or subsequently sold.



USA: T: (800) 338-2581 • F: (828) 248-3929 • Watts.com

Canada: T: (888) 208-8927 • F: (905) 481-2316 • Watts.ca

Latin America: T: (52) 55-4122-0138 • Watts.com

ES-WD-QT-CarrierTrimKits 2206

© 2022 Watts