

## Engineering Specification

Job Name \_\_\_\_\_

Contractor \_\_\_\_\_

Job Location \_\_\_\_\_

Approval \_\_\_\_\_

Engineer \_\_\_\_\_

Contractor's P.O. No. \_\_\_\_\_

Approval \_\_\_\_\_

Representative \_\_\_\_\_

# LEAD FREE\*

## Cast Iron Screwed End Y Strainers

Model: 11M

1/4" - 4"

Call customer service if you need assistance with technical details.

PRESSURE/TEMPERATURE–NON-SHOCK		
Model	Material	Rating
11M	Cast Iron	400psi @ -20°F to 150°F 27.58 bar @ 65.56°C 250psi @ 406°F 17.24 bar @ 207.78°C

**11M****Class 250**

### Features

- Machined seats in both body and cap align and lock the screen in place to stop sediment bypass

### Construction

- Gasketed cap is used for easy disassembly and assembly.
- 3" and 4" models have a Bolted Cap

### Self-Cleaning

- Self cleaning is accomplished by opening the plug or valve connected to the blowoff outlet

### Blowoff Outlets

- Outlets are NPT Tapped
- Sizes of tapping specified on the next page
- Not normally furnished with plug. Plug available, specify with order

\*The wetted surface of this product contacted by consumable water contains less than 0.25% of lead by weight.



Model 11M

### Capacity

- Generously proportioned bodies
- Open Area Ratio much greater than pipe size, ensures low pressure loss

### Screens

MODEL	SIZES	STANDARD (WATER)		STEAM RECOMMENDATION	
		MATERIAL	OPENING	MATERIAL	OPENING
11M	1/2" - 2"	304SS	20 mesh	304SS	30 mesh
11M	2 1/2" - 4"	304SS	.062 perf	304SS	.045 perf

### NOTICE

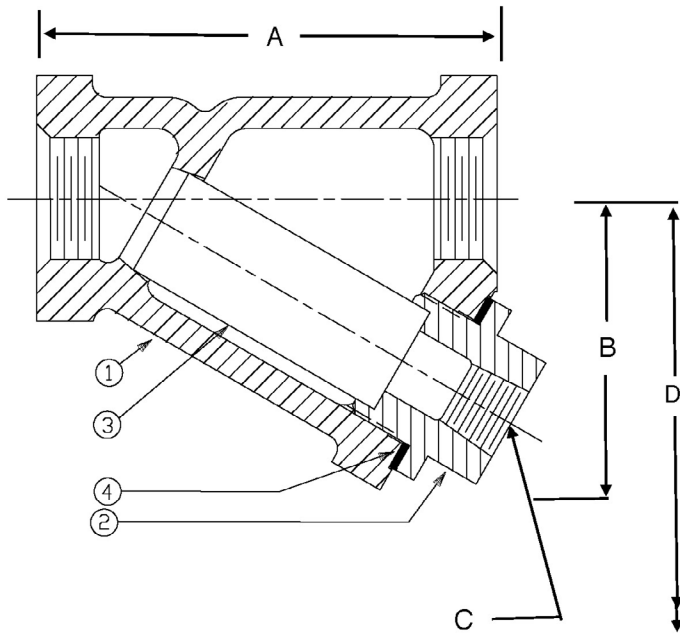
The information contained herein is not intended to replace the full product installation and safety information available or the experience of a trained product installer. You are required to thoroughly read all installation instructions and product safety information before beginning the installation of this product.

Mueller Steam Specialty product specifications in U.S. customary units and metric are approximate and are provided for reference only. For precise measurements, please contact Mueller Steam Specialty Technical Service. Mueller Steam Specialty reserves the right to change or modify product design, construction, specifications, or materials without prior notice and without incurring any obligation to make such changes and modifications on Mueller Steam Specialty products previously or subsequently sold.

**Mueller** Steam Specialty™

A WATTS Brand

## Materials



BILL OF MATERIAL - 11M		
ITEM	DESCRIPTION	MATERIAL
1	BODY	Cast Iron ASTM A126-B
2	CAP	Cast Iron ASTM A126-B
3	SCREEN	304 SS
4	GASKET	Metal Filled Graphite

BILL OF MATERIAL - 11BC ONLY (3", 4")		
Not Shown	COVER **	Cast Iron ASTM A126-B
Not Shown	HEX HEAD CAP SCREWS	SAE J429 Gr. 5

\*\* Cover may be manufactured from equivalent grade plate material

## Pressure Drop

See Pressure Drop Charts in Technical Data section of the Mueller Steam Specialty Engineering binder. Cv values are noted in the Dimensions and Weights table below.

## Dimensions and Weights

SIZE	DIMENSIONS								WEIGHT		Cv
	A		B		C		D		lbs.	kgs.	
in.	in.	mm	in.	mm	in.	mm	in.	mm			GPM
¼	3 <sup>3</sup> / <sub>16</sub>	81	2 <sup>1</sup> / <sub>16</sub>	52	¼	6	2 <sup>3</sup> / <sub>8</sub>	61	1.6	0.7	7
3 <sup>8</sup> / <sub>8</sub>	3 <sup>3</sup> / <sub>16</sub>	81	2 <sup>1</sup> / <sub>16</sub>	52	¼	6	2 <sup>3</sup> / <sub>8</sub>	61	1.6	0.7	7
½	3 <sup>3</sup> / <sub>16</sub>	81	2 <sup>1</sup> / <sub>16</sub>	52	¼	6	2 <sup>3</sup> / <sub>8</sub>	61	1.6	0.7	8
¾	3¾	95	2 <sup>7</sup> / <sub>16</sub>	61	3 <sup>8</sup> / <sub>8</sub>	10	3	77	2.4	1.1	16
1	4	102	2 <sup>5</sup> / <sub>8</sub>	66	3 <sup>8</sup> / <sub>8</sub>	10	3¼	83	3.0	1.4	22
1¼	5	127	3 <sup>3</sup> / <sub>8</sub>	85	¾	20	5	127	5.2	2.3	38
1½	5¾	146	3 <sup>7</sup> / <sub>8</sub>	98	1	25	5	127	8.0	3.6	50
2	7	177	4¾	121	1	25	6 <sup>1</sup> / <sub>8</sub>	157	22.0	5.7	76
2½	9¼	234	5 <sup>7</sup> / <sub>8</sub>	149	1¼	32	7 <sup>7</sup> / <sub>8</sub>	174	22.0	10.0	125
3	10	254	6	152	1¼	32	8	204	30.0	13.6	160
4	15 <sup>3</sup> / <sub>16</sub>	386	11¼	286	1½	40	16	406	70.0	32.0	245

Apply For Certified Drawings.



A WATTS Brand

USA: Tel: (800) 334-6259 • MuellerSteam.com  
Latin America: Tel: (52) 55-4122-0138 • MuellerSteam.com

