

## Engineering Specification

Job Name \_\_\_\_\_

Contractor \_\_\_\_\_

Job Location \_\_\_\_\_

Approval \_\_\_\_\_

Engineer \_\_\_\_\_

Contractor's P.O. No. \_\_\_\_\_

Approval \_\_\_\_\_

Representative \_\_\_\_\_

# LEAD FREE\*

## Cast Iron Flanged Ends Basket Strainers UL Listed for Firelines

Model: 595, Class 125

Sizes: 4" - 12" (102 - 300 mm)

### Typical Service

These strainers are used exclusively to prevent clogging in fire service systems. Such systems can include automatic water sprinklers and various spray systems.

### Features

- Extra large baskets have an Open Area Ratio of at least 7 to 1. AWWA only requires a minimum of 4 to 1 Ratio.
- Extra large capacity baskets equal very low pressure drop and long intervals between cleaning and servicing, essential in this service.
- NPT tapped blow-off and vent connections are standard. Blow-off is at "D" for draining and cleaning, air vent is at "E". See next page for locations and sizes. Plugs are furnished as standard.

### Approvals



Sizes 4" - 12"



Sizes 4" - 8"



Model 595

Call customer service if you need assistance with technical details

PRESSURE/TEMPERATURE - NON-SHOCK	
595	
4" - 12"	
175psi @ -150°F	
12 bar @ 66°C	
125 psi @ 406°F	
10 bar @ 296°C	

Note: Pressure/Temperature can be limited by gasket material. Consult factory.

### Pressure Drop

SIZE (IN.)	PRESSURE DROP @ 15 FT/SEC
4	1.30
6	2.20
8	1.14
10	3.00
12	3.95

### Screens

MODEL	SIZE	STANDARD (WATER)	
		MATERIAL	OPENING
595	In.	304SS	.250 perf
	4 - 12		

### NOTICE

The information contained herein is not intended to replace the full product installation and safety information available or the experience of a trained product installer. You are required to thoroughly read all installation instructions and product safety information before beginning the installation of this product.

\*The wetted surface of this product contacted by consumable water contains less than 0.25% of lead by weight.

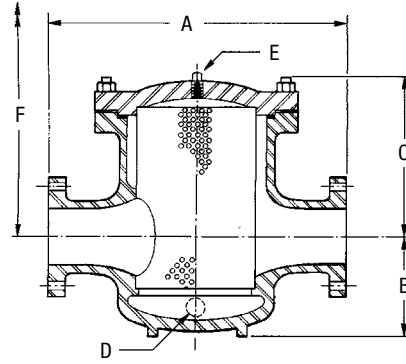
Mueller Steam Specialty product specifications in U.S. customary units and metric are approximate and are provided for reference only. For precise measurements, please contact Mueller Steam Specialty Technical Service. Mueller Steam Specialty reserves the right to change or modify product design, construction, specifications, or materials without prior notice and without incurring any obligation to make such changes and modifications on Mueller Steam Specialty products previously or subsequently sold.

**Mueller Steam Specialty™**

A WATTS Brand

## Materials

BILL OF MATERIAL	
DESCRIPTION	MATERIAL
Body	Cast Iron ASTM A126 Grade B
Cover	Cast Iron ASTM A126 Grade B
Gasket	Compressed Fiber



Model 595

## Dimensions and Weights

SIZE		DIMENSIONS										WEIGHT			
in.	mm	A		B		C		D (NPT)		E (NPT)		F Screen Removal		lbs.	kgs
		in.	mm	in.	mm	in.	mm	in.	mm	in.	mm	in.	mm		
4	100	21	535	7 1/4	184	10 3/8	263	1 1/2	40	1/4	8	22	559	237	107
6	150	26 7/8	683	8	203	14 5/8	371	2	50	1/4	8	31 1/2	800	382	173
8	200	31 5/16	795	10	254	18 7/16	468	2	50	1/4	8	39 1/2	1003	654	297
10	250	35 3/4	908	12	305	20 3/4	527	2	50	1/4	8	44 3/4	1137	963	437
12	300	40 1/4	1022	13 1/2	343	25 13/16	656	2	50	1/4	8	56	1422	1535	697

Apply for Certified Drawings



A WATTS Brand

