

Models: 764, 765M*, 766M*, 767

Job Name _____

Contractor _____

Job Location _____

Approval _____

Engineer _____

Contractor's P.O. No. _____

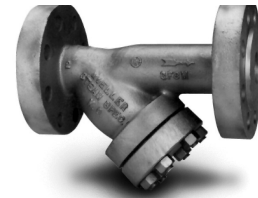
Approval _____

Representative _____

LEAD FREE*

Cast Carbon & Alloy Steel Flanged Ends Y Strainers

Model: 764, 765M*, 766M*, 767
Sizes: ½" - 12"



Models: 764, 765M, 766M, 767

* 765M and 766M supersede models 765/766. Consult factory.

| PRESSURE/TEMPERATURE–NON-SHOCK | | |
|--------------------------------|----------------------------|-------------------|
| MODEL | MATERIAL | RATING |
| 764 | Carbon Steel | 1480 psi @ 100°F |
| | | 102.1 bar @ 38°C |
| | | 825 psi @ 800°F |
| | | 57.5 bar @ 425°C |
| 765M | Carbon Steel | 2220 psi @ 100°F |
| | | 153.2 bar @ 38°C |
| | | 1235 psi @ 800°F |
| | | 86.3 bar @ 425°C |
| 766M | Carbon Steel | 3705 psi @ 100°F |
| | | 255.3 bar @ 38°C |
| | | 2055 psi @ 800°F |
| | | 143.8 bar @ 425°C |
| 767 | Carbon Steel | 6170 psi @ 100°F |
| | | 425.5 bar @ 38°C |
| | | 3430 psi @ 800°F |
| | | 239.7 bar @ 425°C |
| 764 | Chrome-Moly A217 WC6 | 1500 psi @ 100°F |
| | | 103.4 bar @ 38°C |
| | | 430 psi @ 1000°F |
| | | 29.8 bar @ 538°C |
| 765M | Chrome-Moly A217 WC6 | 2250 psi @ 100°F |
| | | 155.1 bar @ 38°C |
| | | 650 psi @ 1000°F |
| | | 44.7 bar @ 538°C |
| 766M | Chrome-Moly A217 WC6 | 3750 psi @ 100°F |
| | | y258.6 bar @ 38°C |
| | | 1080 psi @ 1000°F |
| | | 74.5 bar @ 538°C |
| 767 | Chrome-Moly A217 WC6 | 6250 psi @ 100°F |
| | | 430.9 bar @ 38°C |
| | | 1800 psi @ 1000°F |
| | | 124.1 bar @ 538°C |

764 – Class 600
766M – Class 1500

765M – Class 900
767 – Class 2500

Features

- Machined seats in both body and cap align and lock the screen in place to stop sediment bypass.
- Machined seats facilitate alignment and accurate reseating after servicing.

Mueller Steam Specialty product specifications in U.S. customary units and metric are approximate and are provided for reference only. For precise measurements, please contact Mueller Steam Specialty Technical Service. Mueller Steam Specialty reserves the right to change or modify product design, construction, specifications, or materials without prior notice and without incurring any obligation to make such changes and modifications on Mueller Steam Specialty products previously or subsequently sold.

Construction

- Designed for high pressure and temperature services.
- Alloy bolting for all sizes.
- Heavy gauge reinforced screens are used.
- Flanges are back faced, or spot faced at the boltholes.
- Ring Type Joint (RTJ) flanges are available, consult factory.

Self-Cleaning

- Self-cleaning is accomplished by opening the plug or valve connected to the blowoff outlet, if provided.
- Cleaning usually accomplished by shutting off line pressure and disassembling strainer.

Blowoff Outlets

- Cover flange for 764 is furnished with blowoff tapping, not plugged.
- All other covers normally furnished as blind flanges. Socket weld blowoff connection available, specify on order.

Capacity

- Generously proportioned bodies.
- Open Area Ratio much greater than pipe size, ensuring low pressure drop.
- Minimum of 4 to 1 Open Area Ratio using standard 1/16 and 1/8 perf screens.

Screens

| MODEL | SIZES | STANDARD (WATER) | | STEAM RECOMMENDATION | |
|-------|-----------|------------------|-----------|----------------------|-----------|
| | | MATERIAL | OPENING | MATERIAL | OPENING |
| All | ½ - 4" | 304SS | .062 perf | 304SS | .033 perf |
| All | 5" and Up | 304SS | .125 perf | 304SS | .045 perf |

NOTICE

The information contained herein is not intended to replace the full product installation and safety information available or the experience of a trained product installer. You are required to thoroughly read all installation instructions and product safety information before beginning the installation of this product.

*The wetted surface of this product contacted by consumable water contains less than 0.25% of lead by weight.

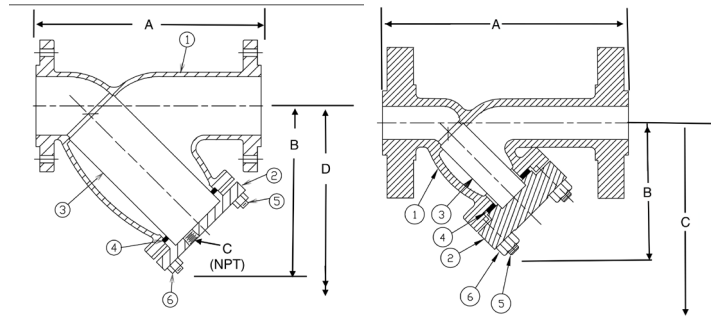
Mueller Steam Specialty™

A WATTS Brand

Material

| BILL OF MATERIAL MODELS 764-767 | | |
|---------------------------------|-------------|----------------------------------|
| ITEM | DESCRIPTION | MATERIAL |
| 1 | BODY | Carbon Steel ASTM A216 Grade WCB |
| 2 | COVER ** | Carbon Steel ASTM A216 Grade WCB |
| 3 | SCREEN | 304 SS |
| 4 | GASKET | Spiral Wound SS, Graphite Filled |
| 5 | STUDS | A193 B7 |
| 6 | NUTS | A194 2H |

** Cover may be manufactured from equivalent grade plate material



Model 764

Model 765M, 766M, 767

Pressure Drop

See Pressure Drop Charts in Technical Data section of the Mueller Steam Specialty Engineering binder. Cv values are noted in the Dimensions and Weights table below.

ALSO AVAILABLE:
 Body/Cap: Carbon-Moly ASTM A217 Gr. WC1,
 Chrome-Moly ASTM A217 Gr. WC6,
 Chrome-Moly ASTM A217 Gr. WC9

Dimensions and Weights

| SIZE | DIMENSIONS | | | | | | | WEIGHT | | Cv | |
|------------|------------|------|--------|-----|-------|----|---------------------|--------|------|------|-------|
| | A | | B | | C | | D Screen Removal | | lbs. | | kgs. |
| in. | in. | mm | in. | mm | in. | mm | in. | mm | in. | mm | GPM |
| 764 | | | | | | | | | | | |
| 1/2 | 6 5/8 | 168 | 3 1/2 | 89 | 3/8 | 10 | 5 | 130 | 6 | 2.7 | 8 |
| 3/4 | 8 5/16 | 211 | 3 3/4 | 95 | 1/2 | 15 | 5 | 130 | 12.3 | 5.5 | 15 |
| 1 | 8 5/16 | 211 | 3 3/4 | 95 | 1/2 | 15 | 5 | 130 | 12.3 | 5.5 | 22 |
| 1 1/4 | 10 1/8 | 257 | 5 1/2 | 140 | 1/2 | 15 | 8 | 203 | 19 | 8.6 | 38 |
| 1 1/2 | 10 1/4 | 260 | 5 1/2 | 140 | 1/2 | 15 | 8 | 203 | 27 | 12 | 42 |
| 2 | 11 | 279 | 7 | 178 | 1/2 | 15 | 10 | 254 | 40 | 18 | 70 |
| 2 1/2 | 12 | 305 | 8 1/4 | 210 | 1 | 25 | 12 1/2 | 318 | 60 | 27 | 110 |
| 3 | 13 1/2 | 343 | 9 1/4 | 235 | 1 1/4 | 32 | 14 1/2 | 368 | 78 | 35 | 140 |
| 4 | 17 15/16 | 456 | 12 1/2 | 318 | 1 1/2 | 40 | 19 1/2 | 495 | 160 | 72.7 | 245 |
| 5 | 22 1/4 | 565 | 15 | 381 | 2 | 50 | 23 | 584 | 254 | 115 | 400 |
| 6 | 25 3/8 | 651 | 20 | 508 | 2 | 50 | 31 | 787 | 364 | 165 | 600 |
| 8 | 31 3/4 | 806 | 24 | 610 | 2 | 50 | 38 1/2 | 978 | 670 | 304 | 1,000 |
| 10 | 37 1/16 | 957 | 28 1/2 | 724 | 2 | 50 | 45 1/2 | 1156 | 1090 | 495 | 1,580 |
| 12 | 45 1/2 | 1156 | 34 1/2 | 876 | 2 | 50 | 52 | 1321 | 1558 | 708 | 2,200 |

| SIZE | DIMENSIONS | | | | | | | WEIGHT | | Cv | |
|-------------|------------|-----|--------|-----|---------------------|------|------|--------|-------|------|-----|
| | A | | B | | C Screen Removal | | lbs. | | kgs. | | |
| in. | in. | mm | in. | mm | in. | mm | in. | mm | lbs. | kgs. | GPM |
| 765M | | | | | | | | | | | |
| 1/2 | 8 1/8 | 206 | 4 1/4 | 108 | 6" | 152 | 20 | 9 | 8 | | |
| 3/4 | 9 1/16 | 230 | 4 3/4 | 121 | 6" | 152 | 30 | 13.6 | 15 | | |
| 1 | 10 11/16 | 271 | 5 3/4 | 146 | 8 1/4" | 210 | 52 | 23 | 22 | | |
| 1 1/4 | 12 | 305 | 6 3/4 | 171 | 8 1/4" | 210 | 64.5 | 29 | 38 | | |
| 1 1/2 | 12 | 305 | 6 3/4 | 171 | 8 1/4" | 210 | 64.5 | 29 | 42 | | |
| 2 | 13 15/16 | 354 | 7 1/2 | 191 | 8 3/8" | 216 | 93 | 42 | 70 | | |
| 2 1/2 | 17 1/2 | 445 | 10 3/4 | 273 | 12 1/2" | 318 | 185 | 84 | 110 | | |
| 3 | 17 1/2 | 445 | 10 3/4 | 273 | 12 1/2" | 318 | 185 | 84 | 140 | | |
| 4 | 23 1/4 | 591 | 15 | 381 | 21" | 533 | 250 | 113 | 245 | | |
| 6 | 27 3/4 | 705 | 18 7/8 | 479 | 30 11/16" | 787 | 560 | 254 | 600 | | |
| 8 | 33 1/4 | 846 | 23 3/8 | 606 | 36 1/4" | 921 | 1000 | 454 | 1,000 | | |
| 10 | CF | CF | CF | CF | 46 1/2" | 1181 | CF | CF | 1,580 | | |
| 12 | CF | CF | CF | CF | 55 1/4" | 1403 | CF | CF | 2,200 | | |

| SIZE | DIMENSIONS | | | | | WEIGHT | | Cv | |
|-------------|------------|-----|----------|-----|---------------------|--------|------|------|-------|
| | A | | B | | C Screen Removal | | lbs. | | kgs. |
| in. | in. | mm | in. | mm | in. | mm | lbs. | kgs. | GPM |
| 766M | | | | | | | | | |
| 1/2 | 8 1/8 | 206 | 4 1/4 | 108 | 6" | 152 | 20 | 9 | 8 |
| 3/4 | 9 1/16 | 230 | 4 3/4 | 121 | 6" | 152 | 30 | 13.6 | 15 |
| 1 | 10 11/16 | 271 | 5 3/4 | 146 | 8 1/4" | 210 | 52 | 23 | 22 |
| 1 1/4 | 12 | 305 | 6 3/4 | 171 | 8 1/4" | 210 | 64.5 | 29 | 38 |
| 1 1/2 | 12 | 305 | 6 3/4 | 171 | 8 1/4" | 210 | 64.5 | 29 | 42 |
| 2 | 13 15/16 | 354 | 7 1/2 | 191 | 8 3/8" | 216 | 93 | 42 | 70 |
| 2 1/2 | 17 1/2 | 445 | 10 3/4 | 273 | 12 1/2" | 318 | 185 | 84 | 110 |
| 3 | 17 1/2 | 445 | 10 3/4 | 273 | 12 1/2" | 318 | 185 | 84 | 140 |
| 4 | 23 1/4 | 591 | 15 | 381 | 21" | 533 | 334 | 151 | 245 |
| 6 | 30 3/8 | 778 | 20 1/2 | 521 | 30 11/16" | 787 | 770 | 350 | 600 |
| 8 | 39 | 991 | 26 15/16 | 684 | 36 1/4" | 921 | 1200 | 545 | 1,000 |
| 10 | CF | CF | CF | CF | CF | CF | CF | CF | 1,580 |
| 12 | CF | CF | CF | CF | CF | CF | CF | CF | 2,200 |

| SIZE | DIMENSIONS | | | | | WEIGHT | | Cv | |
|------------|------------|-----|----------|-----|---------------------|--------|------|------|-------|
| | A | | B | | C Screen Removal | | lbs. | | kgs. |
| in. | in. | mm | in. | mm | in. | mm | lbs. | kgs. | GPM |
| 767 | | | | | | | | | |
| 1/2 | 12 5/8 | 321 | 7 11/16 | 195 | 10 | 254 | 30 | 13.6 | 8 |
| 3/4 | 12 5/8 | 321 | 7 11/16 | 195 | 10 | 254 | 40 | 18 | 15 |
| 1 | 12 5/8 | 321 | 7 11/16 | 195 | 10 | 254 | 65 | 29.5 | 22 |
| 1 1/4 | 16 7/8 | 429 | 10 1/2 | 267 | 13 | 331 | 140 | 63.3 | 38 |
| 1 1/2 | 16 7/8 | 429 | 10 1/2 | 267 | 13 | 331 | 140 | 63.6 | 42 |
| 2 | 18 15/16 | 481 | 12 1/2 | 318 | 15 | 381 | 240 | 109 | 70 |
| 2 1/2 | 25 3/4 | 654 | 18 13/16 | 478 | 21 | 534 | 500 | 227 | 110 |
| 3 | 26 3/4 | 679 | 18 13/16 | 478 | 21 | 534 | 560 | 254 | 140 |
| 4 | 33 3/8 | 854 | 20 1/4 | 514 | 23 | 585 | 850 | 386 | 245 |
| 6 | 33 3/4 | 857 | 20 | 508 | 23 | 585 | 900 | 862 | 600 |
| 8 | CF | CF | CF | CF | CF | CF | CF | CF | 1,000 |
| 10 | CF | CF | CF | CF | CF | CF | CF | CF | 1,580 |
| 12 | CF | CF | CF | CF | CF | CF | CF | CF | 2,200 |

Apply For Certified Drawings.
 CF=Consult Factory

Limited Warranty: Mueller Steam Specialty warrants each product to be free from defects in material and workmanship under normal usage for a period of one year from the date of original shipment. In the event of such defects within the warranty period, the Company will, at its option, replace or recondition the product without charge. This shall constitute the sole and exclusive remedy for breach of warranty, and the Company shall not be responsible for any incidental, special or consequential damages, including without limitation, lost profits or the cost of repairing or replacing other property which is damaged if this product does not work properly, other costs resulting from labor charges, delays, vandalism, negligence, fouling caused by foreign material, damage from adverse water conditions, chemical, or any other circumstances over which the Company has no control. This warranty shall be invalidated by any abuse, misuse, misapplication or improper installation of the product. **THIS WARRANTY IS IN LIEU OF ALL OTHER WARRANTIES, EXPRESS OR IMPLIED, INCLUDING ANY IMPLIED WARRANTIES OF MERCHANTABILITY OR FITNESS FOR A PARTICULAR PURPOSE.** Any implied warranties that are imposed by law are limited in duration to one year.

Some States do not allow limitations on how long an implied warranty lasts, and some States do not allow the exclusion or limitation of incidental or consequential damages. Therefore the above limitations may not apply to you. This Limited Warranty gives you specific legal rights, and you may have other rights that vary from State to State. You should consult applicable state laws to determine your rights.



A WATTS Brand

USA: T: (800) 334-6259 • F: (800) 421-6772 • MuellerSteam.com
 Latin America: T: (52) 81-1001-8600 • MuellerSteam.com