

For Residential, Light Commercial, and Snow Melt Applications

Job Name _____

Contractor _____

Job Location _____

Approval _____

Engineer _____

Contractor's P.O. No. _____

Approval _____

Representative _____

HydroNex® Primary Panel

Sizes: 1-1/4" Trunk

Primary Panels are designed to supply down-stream HydroNex Distribution panels with boiler water, remove air and provide essential service and monitoring capabilities.

Primary and Distribution panels include only the supply portion of the primary loop. The return portion of this loop must always be field piped in 1-1/4" copper back to the boiler or dedicated heat source.

All Primary panels are designed to connect directly to any Distribution panel via the included union. Control logic is transferred from the Distribution panels to the Primary panel via the included CAT-5 cable connection.

Optional accessories include auto-fill assembly and Domestic Hot Water with or without priority.

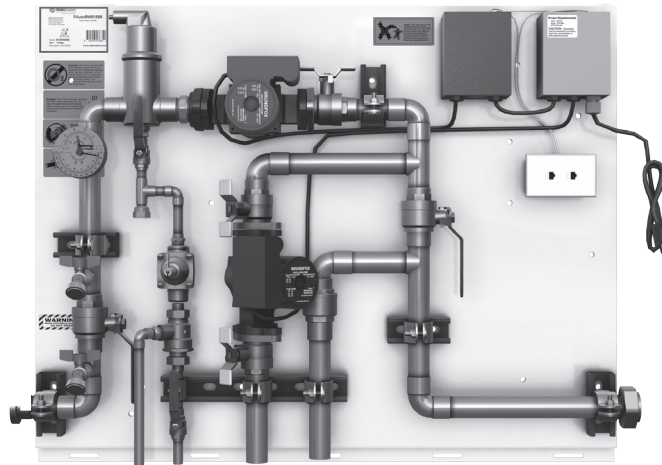
Installation Parameters

Make sure an electrical outlet is within 3 feet of where the Primary panel will mount. If there are no outlets nearby, one will need to be added.

Install and level Z-Bracket with 1/4" x 2-1/2" lag screw to studs. Make sure the Z bracket is the correct size for the given primary panel. Incorrect Z brackets may interfere with cover placement.

Hang the Primary panel on the Z-Bracket. Lag screws should be added to the bottom of the panel, further securing the panel to the wall. Hang cover from top down.

In order to avoid property damage, injury, and/or death, please refer to the complete installation manual and warnings provided with the product.



Features

Wall mounted white powder coated back panel and cover
Easy access to all components
Pre-wired circulators and controls
Simple CAT-5 jump wiring to connect panels
O-Ring sealed, threaded union connection between panels
Integrated leveling system
Z-Bracket for simplified mounting

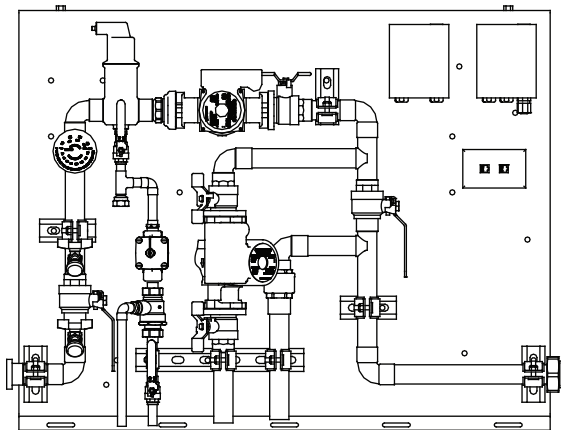
Specifications

Supply Voltage	120 Volts
Circulator Type	Watts Radiant 15-58, 26-99 Taco 008, 0011 Bell and Gossett NRF-22, PL-30
Fill Assembly	Manual Only Manual and Autofill
Electrical	Relay and Cat-5 Connection
Optional	DHW Zone with or without priority.
Temperature, Pressure Ratings	200°F @ 100 psi.

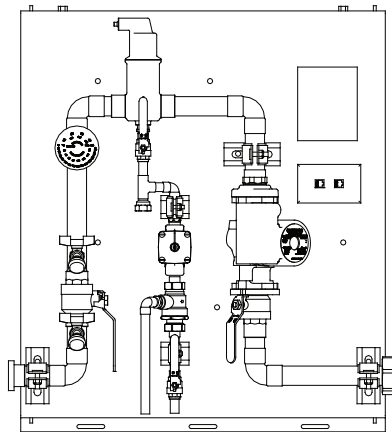
Note: Maximum total total flow rate is 22 gpm.

WattsRadiant™
Floor Heating & Snow Melting

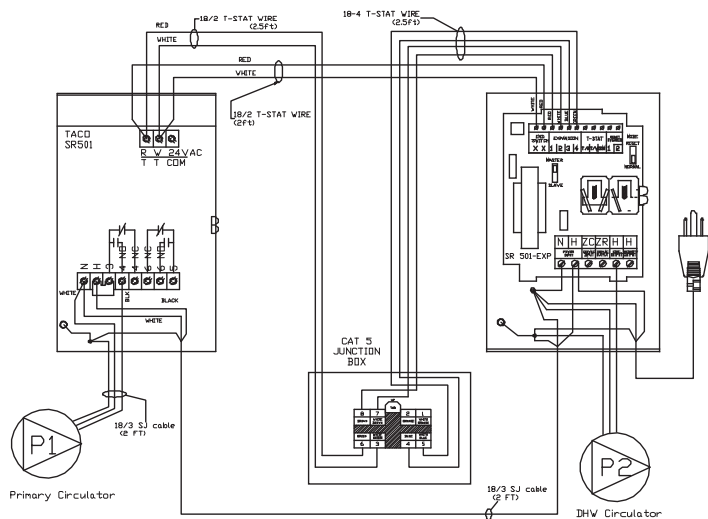
Watts product specifications in U.S. customary units and metric are approximate and are provided for reference only. For precise measurements, please contact Watts Technical Service. Watts reserves the right to change or modify product design, construction, specifications, or materials without prior notice and without incurring any obligation to make such changes and modifications on Watts products previously or subsequently sold.



*HydroNex Primary with automatic fill assembly
and Domestic Hot Water*

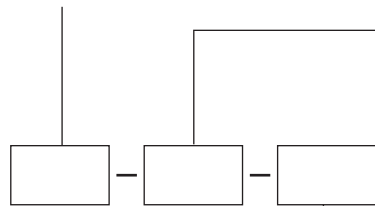


*HydroNex Primary with automatic
fill assembly*



HydroNex Primary with Domestic Hot Water

PA: Auto Fill
PM: Manual Fill



PO: Primary Only

PD: Primary and DHW Circulators

Circulator Options

1. Watts Radiant 1558
2. Watts Radiant 2699
3. B&G NRF 22
4. B&G PL 30
5. Taco 008
6. Taco 0011

**NOTE: Primary circulator and
the DHW circulator are the
same brand/model**

Description	Model #	Wt. (lbs)	Size
P-Panel with Manual Fill	PM - ____ - PO	55-60	S
P-Panel with Auto Fill	PA - ____ - PO	55-60	S
P-Panel with Manual Fill and DHW	PM - ____ - PD	65-70	M
P-Panel with Auto Fill and DHW	PA - ____ - PD	65-70	M

S = 28" wide x 31.5" tall x 12" deep

M = 40" wide x 31.5" tall x 12" deep

WattsRadiant™
Floor Heating & Snow Melting

USA: 4500 East Progress Place, Springfield, MO 65803; www.wattsradiant.com

Canada: 5435 North Service Rd., Burlington, ONT. L7L 5H7; www.wattscanada.ca

© 2011 Watts Radiant