

Instructions for R-flex Link Belts

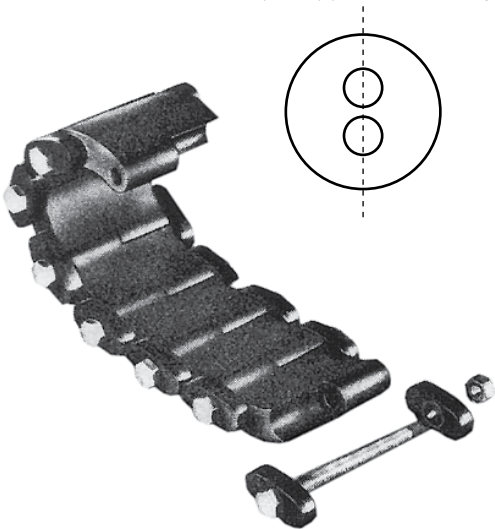
Used with or without a Wall Sleeve Sealer

When transitioning R-flex across a structural wall, be sure to keep the Dual pipe oriented in the vertical plane, as shown. Failure to do this will cause connection issues at necessary intersections. Failure to do this will cause issues at connection points.

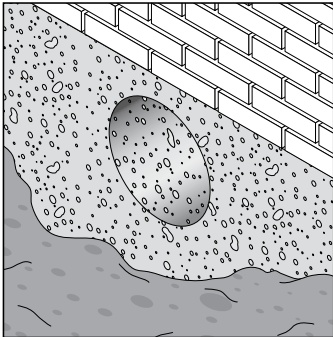
The point where the R-flex penetrates the structure must be sealed. This can be done in a variety of ways, depending on the wall construction.

Wall seals are available in two styles: a Link Sleeve, and a Wall Sleeve. The Link Sleeve is designed to be used when going through existing walls. The Wall Sleeve is to be used when a concrete wall is to be poured around the R-flex.

Keep dual pipe oriented vertically

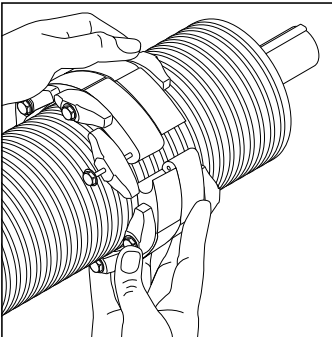


Installation



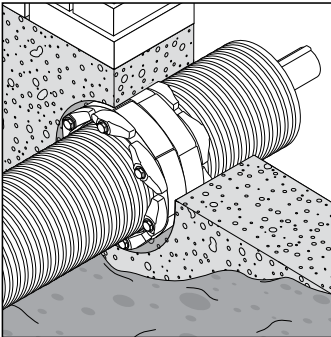
1. Drill a hole according to minimum and maximum dimensions (see column wall opening).

Center the pipe, cable or conduit in wall opening or casing. Make sure the pipe will be adequately supported on both ends.

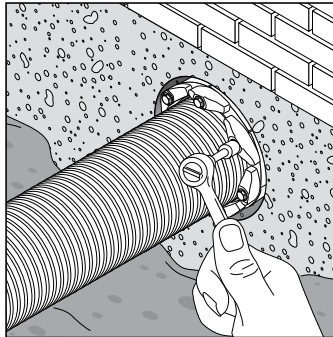


2. Loosen rear pressure plate with nut just enough so links move freely. Check to be sure all bolt heads are facing the installer. Extra slack or sag is normal.

Make sure the pipe is held straight for at least 2 ft (60 cm) before and after the belt. Bends are not allowed.

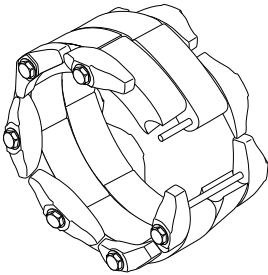


3. Slide belt assembly into annular space. Start inserting Link-Seal modular seal assembly at the 6 o'clock position and work both sides up toward the 12 o'clock position



4. Using a hand socket or offset wrench ONLY, start at 12 o'clock. Do not tighten any bolt more than 4 turns at a time. Continue in a clockwise manner until links have been uniformly compressed. (Approx. 2 or 3 rotations)

5. Make 2 or 3 more passes at 4 turns per bolt MAXIMUM, tightening all bolts clockwise until all sealing elements "bulge" around all pressure plates.



Link Belt	Description	Links Req'd	outer jacket Ø	wall opening
Order #				
81012948	LinkBelt, 125mm outer casing	15	125 mm	152 mm (6.00 in)
81012949	LinkBelt, 160mm outer casing	15	160 mm	203.3 mm (8.00 in)
81012950	LinkBelt, 200mm outer casing	17	200 mm	254 mm (10.00 in)

Link-Seal® Modular Seal - Do's

1. Make sure pipe is centered.
2. Install the belt with the pressure plates evenly spaced.
3. Make sure seal assembly and pipe surfaces are free from dirt.
4. For tight fits, use non-polluting liquid detergent to assist installation.

Link-Seal® Modular Seal - Don'ts

1. Don't install the belt with the pressure plates aimed in irregular directions. (Staggered)
2. Don't torque each bolt completely before moving on to the next.
3. Don't use high speed power tools (450 rpm or more)
4. Don't use grease installing Link-Seal modular seals.

Instructions for R-flex Wall Seals

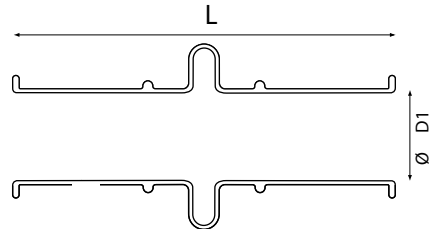
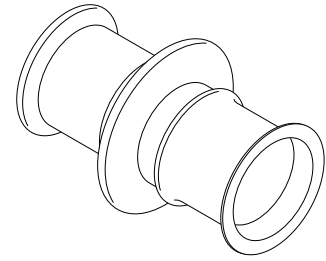
Wall Sleeve Seal

Where pipes must pass through walls and floors of new structures, molded nonmetallic high density polyethylene CS sleeves can be installed.

Molded-in waterstop and reinforcing ribs serve to anchor the sleeve in the wall and resist pour forces. Nailor end caps are provided to make placement in forms simple and accurate. In the event of a field change they can be shortened with ordinary hand tools.

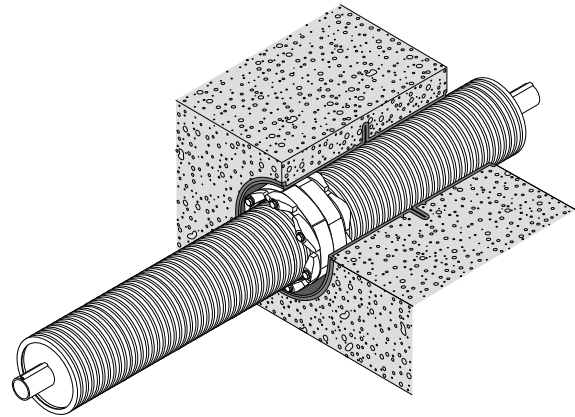
The sleeve is purposely molded with a texture on the outside surface to assure a much better bond than most plastic-to-concrete interfaces.

Each Wall Sleeve comes complete with corresponding sizes LinkBelts to complete the seal between the R-flex and the Wall Sleeve.



Installation

- 1 Nailor end caps are installed at each end of the sleeve to prevent deformation during the initial concrete pour and hold sleeve in exact location. Place one end cap at each end of the sleeve.
- 2 Remaining end cap is inserted into sleeve. Wide flange area on cap provides good surface against wall form, and resists weight of concrete pour.
- 3 Workman checks sleeve installation prior to erecting outside form wall.
- 4 Keep end caps in place after wall is poured and the form has been removed. The end caps seal sleeve against dirt and debris.
- 5 Just before pipe penetration, caps are removed to reveal clean inside surface of sleeve.



Order #	Ø pipe jacket	D1	L
81012931	125 mm (4.92 in)	208.5 mm (8.21 in)	406.4 mm (16 in)
81012932	160 mm (6.30 in)	208.5 mm (8.21 in)	406.4 mm (16 in)
81012933	200 mm (7.87 in)	258.8 mm (10.19 in)	406.4 mm (16 in)

Wall Sleeves come complete with end caps and corresponding Link Belts.

Limited Warranty: Watts Radiant (the "Company") warrants each product to be free from defects in material and workmanship under normal usage for a period of one year from the date of original shipment. In the event of such defects within the warranty period, the Company will, at its option, replace or recondition the product without charge.

THE WARRANTY SET FORTH HEREIN IS GIVEN EXPRESSLY AND IS THE ONLY WARRANTY GIVEN BY THE COMPANY WITH RESPECT TO THE PRODUCT. THE COMPANY MAKES NO OTHER WARRANTIES, EXPRESS OR IMPLIED. THE COMPANY HEREBY SPECIFICALLY DISCLAIMS ALL OTHER WARRANTIES, EXPRESS OR IMPLIED, INCLUDING BUT NOT LIMITED TO THE IMPLIED WARRANTIES OF MERCHANTABILITY AND FITNESS FOR A PARTICULAR PURPOSE.

The remedy described in the first paragraph of this warranty shall constitute the sole and exclusive remedy for breach of warranty, and the Company shall not be responsible for any incidental, special or consequential damages, including without limitation, lost profits or the cost of repairing or replacing other property which is damaged if this product does not work properly, other costs resulting from labor charges, delays, vandalism, negligence, fouling caused by foreign material, damage from adverse water conditions, chemical, or any other circumstances over which the Company has no control. This warranty shall be invalidated by any abuse, misuse, misapplication, improper installation or improper maintenance or alteration of the product.

Some States do not allow limitations on how long an implied warranty lasts, and some States do not allow the exclusion or limitation of incidental or consequential damages. Therefore the above limitations may not apply to you. This Limited Warranty gives you specific legal rights, and you may have other rights that vary from State to State. You should consult applicable state laws to determine your rights. **SO FAR AS IS CONSISTENT WITH APPLICABLE STATE LAW, ANY IMPLIED WARRANTIES THAT MAY NOT BE DISCLAIMED, INCLUDING THE IMPLIED WARRANTIES OF MERCHANTABILITY AND FITNESS FOR A PARTICULAR PURPOSE, ARE LIMITED IN DURATION TO ONE YEAR FROM THE DATE OF ORIGINAL SHIPMENT.**



USA: 4500 East Progress Place, Springfield, MO 65803; www.wattsradiant.com
Canada: 5435 North Service Rd., Burlington, ONT. L7L 5H7; www.wattscanada.ca