

Engineering Specification

Job Name _____

Contractor Signature _____

Orion Representative _____

Approval Date _____

Quantity Required _____

Contractor's P.O. No. _____

Please e-mail your signed and completed submittal and purchase order to oriontanks@wattswater.com.

Type J-H20 Trap Door

Specification

Orion Type J-H20 Trap Door shall be steel construction, single or double leaf design, with AASHTO H-20 wheel loading reinforcing and engineered lift assistance for controlled cover operation unaffected by temperature. Cover shall be 1/4" steel diamond pattern plate, channel frame shall be 1/4" steel with full perimeter anchor flange, hinges shall be designed for horizontal installation and shall be through bolted to the cover with tamperproof Type 316 stainless steel lock bolts and to the frame with Type 316 stainless steel bolts and lock nuts. Channel frame shall come with 1 1/2" drain coupling. Lifting mechanism shall be compression spring operators enclosed in telescopic anti-corrosive composite tubes with upper tube being the outer tube, providing controlled cover operation through the entire arc of opening and checking downward motion of the cover when closing. The lower tube shall interlock with a flanged support shoe fastened to a formed 1/4" gusset support plate. Cover shall be equipped with a hold-open arm to automatically lock cover in open position. Trap door shall include one removable exterior turn/lift handle with spring-loaded ball detent to open the cover; latch release shall be protected by a flush, gasketed, removable screw plug. Hardware shall be heavy forged brass hinges with 3/8" diameter minimum Type 316 stainless steel pins, Type 316 stainless steel snap lock with fixed handle mounted on underside of cover, with all other hardware zinc-plated and chromate sealed. Finish shall be red oxide primed steel.



Check Box	Model No.	Frame Opening Dimensions
<input type="checkbox"/>	J1H20	24" x 24"
<input type="checkbox"/>	J4H20	36" x 36"
<input type="checkbox"/>	JD2H20	48" x 48"
<input type="checkbox"/>	JD4H20	60" x 60"

Note: "D" represents a double door version

NOTICE

The information contained herein is not intended to replace the full product installation and safety information available or the experience of a trained product installer. You are required to thoroughly read all installation instructions and product safety information before beginning the installation of this product. Types J, JD, J-H20 and K trap doors are manufactured by The Bilco Company.

Orion Fittings product specifications in U.S. customary units and metric are approximate and are provided for reference only. For precise measurements, please contact Orion Fittings Technical Service. Orion Fittings reserves the right to change or modify product design, construction, specifications, or materials without prior notice and without incurring any obligation to make such changes and modifications on Orion Fittings products previously or subsequently sold.

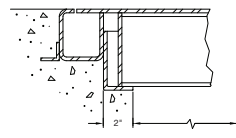
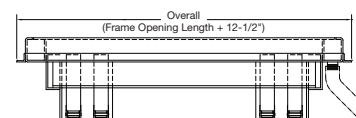
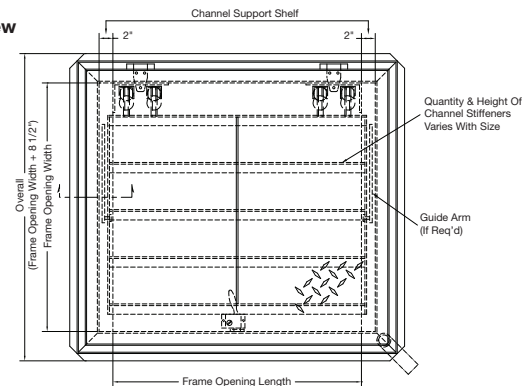
USA: T: (800) 334-6259 • OrionFittings.com

Canada: T: (888) 208-8927 • F: (888) 479-2887 • OrionFittings.ca

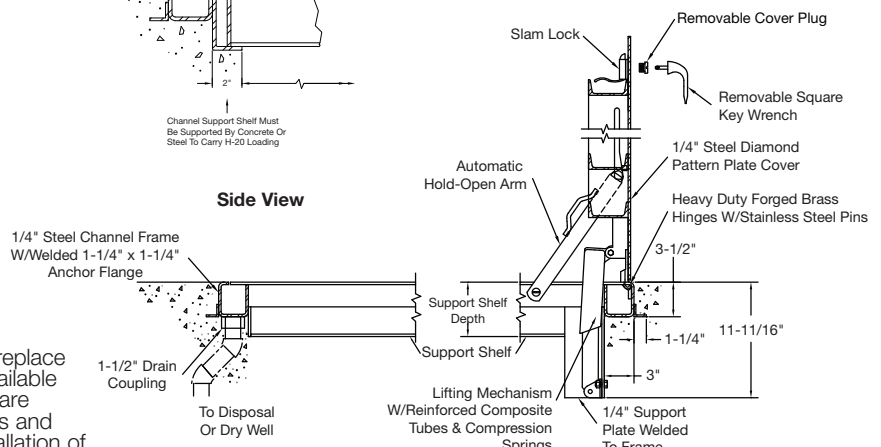
Latin America: T: (52) 55-4122-0138 • OrionFittings.com

ES-OR-TypeJ-H20-TrapDoor 2220

Top View



Side View



ORION®

A WATTS Brand