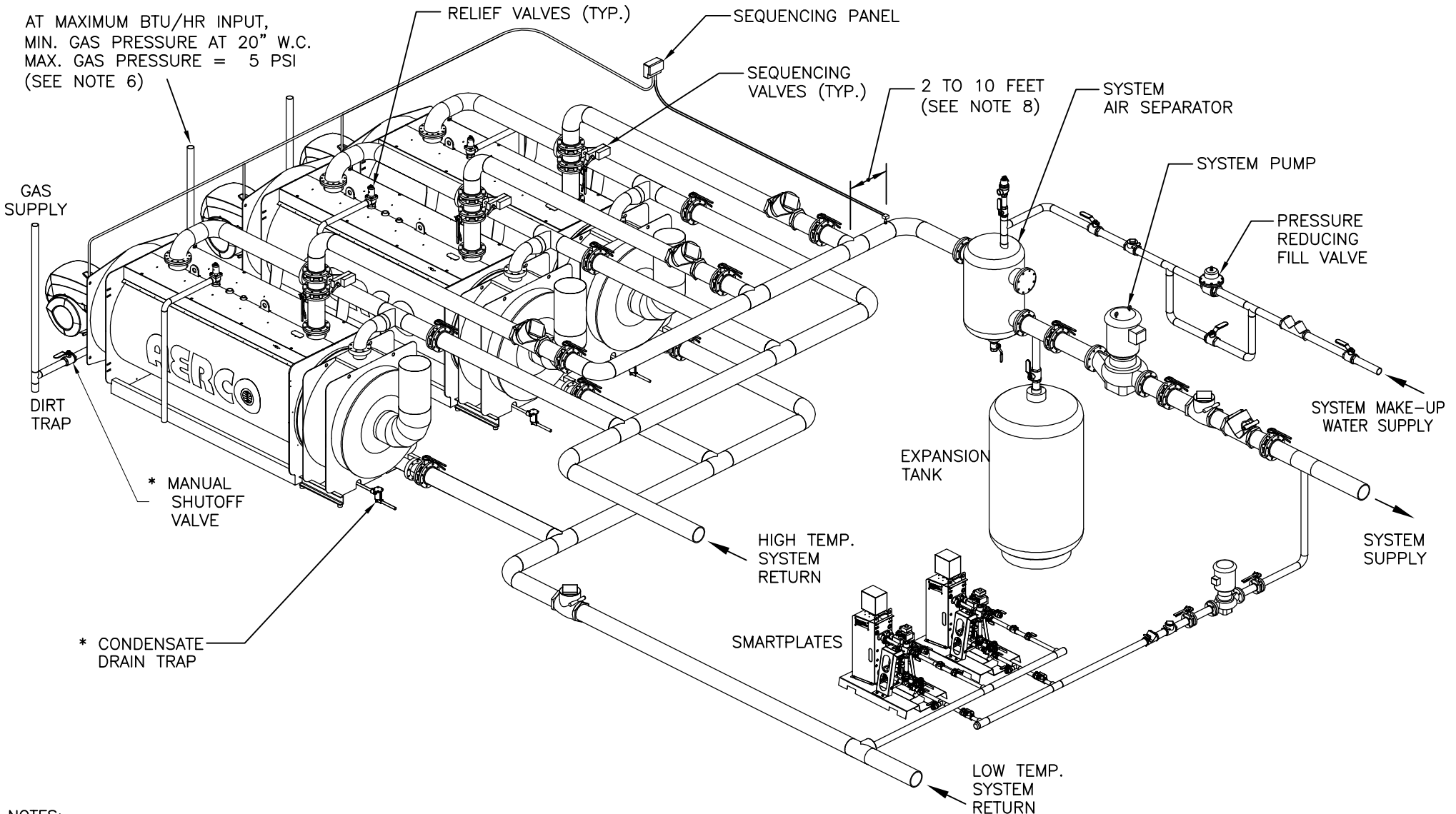


AT MAXIMUM BTU/HR INPUT,  
MIN. GAS PRESSURE AT 20" W.C.  
MAX. GAS PRESSURE = 5 PSI  
(SEE NOTE 6)



- NOTES:
1. FOR ACTUAL SIZES AND LOCATIONS OF PIPING AND OTHER CONNECTIONS TO THE HEATER, SEE DIMENSIONAL DRAWINGS.
  2. SHELL DRAIN VALVE AND CONDENSATE HOSE SHOULD BE ARRANGED TO PERMIT THE FLUIDS TO DRAIN FREELY, BY GRAVITY, TO A FLOOR DRAIN. RELIEF VALVE DISCHARGE SHOULD BE PIPED TO THE NEAREST FLOOR DRAIN. WHEN NO FLOOR DRAIN IS AVAILABLE, THE RELIEF VALVE DISCHARGE SHOULD BE PIPED VERTICALLY TO A HEIGHT MAXIMUM 18" ABOVE THE FLOOR.
  3. ALL (\*) ITEMS ARE INCLUDED SEPARATELY IN SHIPMENT FROM FACTORY.
  4. THIS IS A TYPICAL INSTALLATION DRAWING. LOCAL CODES AND AUTHORITIES SHOULD BE CONSULTED.
  5. LOCATE WATER INLET AND OUTLET FITTINGS (i.e.UNIONS, ELBOWS, ETC.) A MINIMUM OF 18" FROM WATER HEATER FITTINGS, TO PREVENT INTERFERENCE WITH SERVICE.
  6. GAS PRESSURE RANGE IS DEPENDENT ON GAS TRAIN ORDERED. CONSULT MFC SERIES FUEL SUPPLY GUIDE GF-148G FOR ADDITIONAL DETAILS.
  7. WHEN USING THE AERCO CONDENSATE NEUTRALIZER TANK, FOR PROPER CONDENSATE DRAINAGE, THE NEUTRALIZER TANK MUST BE INSTALLED IN A PIT OR THE BOILER AND THE AERCO CONDENSATE TRAP MUST BE ELEVATED HIGHER THAN 4" ABOVE THE FLOOR. SEE CONDENSATE TANK INSTRUCTIONS TID-0074 FOR DETAILS.
  8. HEADER SENSOR MUST BE INSTALLED BETWEEN 2 TO 10 FEET FROM PIPE JUNCTION.

|   |           |                     |
|---|-----------|---------------------|
|   |           | Blauevelt, NY 10913 |
| MFC SERIES GAS FIRED BOILERS—MULTI UNIT WITH SEQUENCING VALVES, SMARTPLATE & COMBINATION PLANT INSTALLATION |           |                     |
| DWN.BY <u>K.S.</u> DATE <u>041415</u><br>SCALE <u>NTS</u><br>APPD. _____ DATE _____                         | SD-A-1062 | REV<br>A            |