

Installation, Operation and Maintenance Manual

Series W7000

2-Piece Sanitary Butterfly Valves with
Tri Clamp & Tube Weld Connections

Models: W7200, W7400



W7200 with Lever Handle



W7400 with Lever Handle



W7200 with Gear Operator



W7400 with Gear Operator

Important Safety Information



Verify system is fully depressurized and drained prior to installation or service.



Use appropriate personal protective equipment (PPE). Do not exceed valve pressure, temperature, or media compatibility limits.



Follow all applicable local safety and sanitary regulations.

WARNING



Please read carefully before proceeding with installation. Your failure to follow any attached instructions or operating parameters may lead to the product's failure.

Keep this Manual for future reference.



WARNING

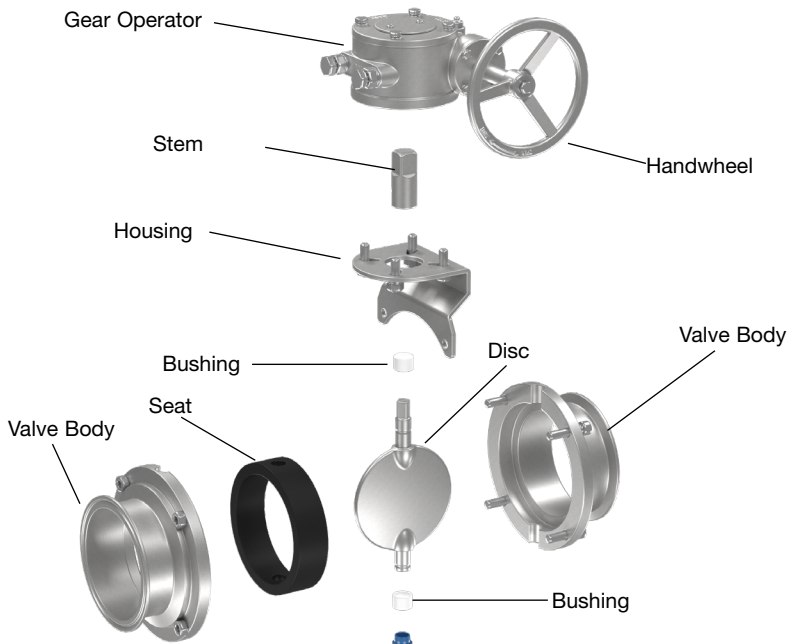
You are required to consult the local building and plumbing codes prior to installation. If the information in this manual is not consistent with local building or plumbing codes, the local codes should be followed. Inquire with governing authorities for additional local requirements.

NOTICE

Inquire with governing authorities for local installation requirements

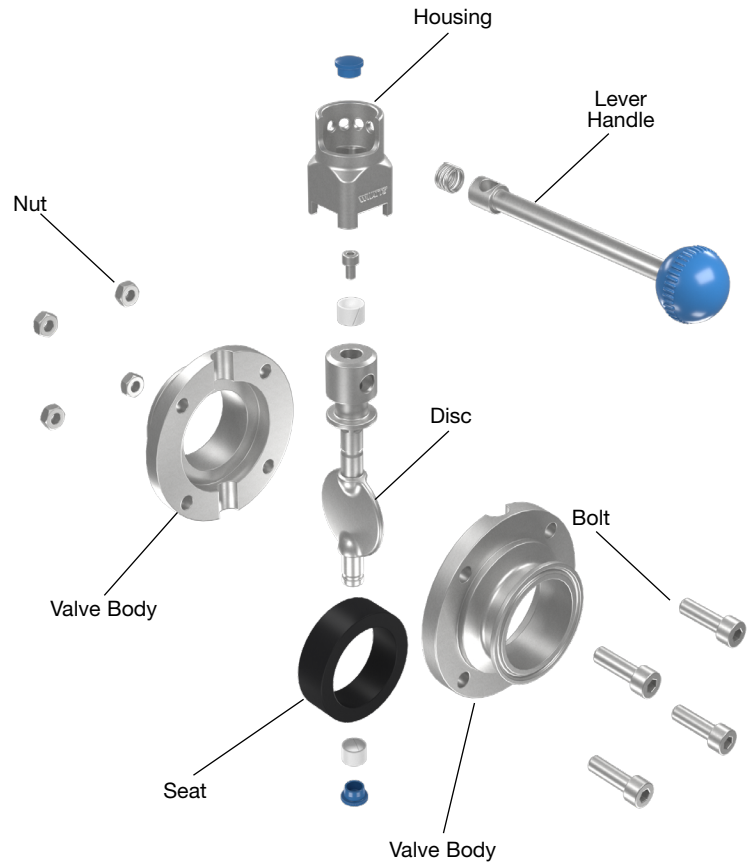
NOTICE

Follow the guidelines listed here for proper installation, operation, and maintenance.



General Information

Sanitary butterfly valves are designed for hygienic applications requiring cleanability and product integrity. Proper installation and maintenance are critical to ensure optimal performance and compliance with applicable sanitary standards.



* See Watts.com for available repair kits.

Installation Instructions

Pre-Installation

1. Inspect Valve for damage, contamination, or foreign material
2. Verify seat and disc materials are compatible with process media and cleaning agents
3. Ensure all mating components (clamps, gaskets, ferrules) are clean and undamaged

Orientation

1. Valve may be installed in any orientation unless otherwise specified
2. For optimal drainage in hygienic systems, install with stem in horizontal position where possible

Connection

1. Install using appropriate sanitary connections (tri-clamp, tube weld end, etc.)
2. Ensure proper gasket alignment to prevent leakage or contamination
3. Tighten clamps evenly to avoid distortion

Operation

1. Operate valve within specified pressure and temperature limits of 14.5 - 145 psi and -4-275°F
2. Ensure valve is fully open during CIP/SIP cycles unless otherwise required

Maintenance

Routine Inspection

1. Periodically inspect for leakage, wear, or damage
2. Check seat integrity and disc condition
3. Verify actuator operation and alignment

Seat and Seal Replacement

4. Depressurize, drain, and isolate the valve prior to disassembly.
5. Remove clamps or fasteners and begin disassembly as outlined below.

Lever Handle Valves

1. Remove protective caps from the top and bottom of the valve.
2. Pull the handle fully outward to expose the inner bolt, loosen the bolt and remove the top housing assembly.
3. Remove body bolts and separate the valve body halves.
4. Remove the disc and seat assembly.
5. Remove bushings.
6. To remove the seat, compress it and pull it over the short end of the valve stem.

Gear Operator Valves

1. Remove protective caps from the bottom of the valve.
2. Remove gear operator mounting bolts and lift the operator off the valve
3. Remove body bolts and separate the valve body halves.
4. Remove the disc and seat assembly.
5. Remove bushings.
6. To remove the seat, compress it and pull it over the short end of the valve stem.

Reassembly

1. Reassemble in reverse order of disassembly
2. Ensure all components are clean and free of damage prior to installation
3. Verify proper alignment of the valve stem and disc during reassembly
4. Tighten all bolts evenly to ensure proper sealing and operation
5. Cycle the valve to confirm smooth operation before returning to service

SIZE	BOLT TORQUE (FT LB)
½"	3.7
¾"	4.4
1"	5.2
1 ¼"	7.4
1 ½"	7.4
2"	7.4
2 ½"	8.9
3"	8.9
4"	8.9

Watts Regulator Co. (the "Company") warrants each product to be free from defects in material and workmanship under normal usage for a period of one year from the date of original shipment. In the event of such defects within the warranty period, the Company will, at its option, replace or recondition the product without charge.

THE WARRANTY SET FORTH HEREIN IS GIVEN EXPRESSLY AND IS THE ONLY WARRANTY GIVEN BY THE COMPANY WITH RESPECT TO THE PRODUCT. THE COMPANY MAKES NO OTHER WARRANTIES, EXPRESS OR IMPLIED. THE COMPANY HEREBY SPECIFICALLY DISCLAIMS ALL OTHER WARRANTIES, EXPRESS OR IMPLIED, INCLUDING BUT NOT LIMITED TO THE IMPLIED WARRANTIES OF MERCHANTABILITY AND FITNESS FOR A PARTICULAR PURPOSE.

The remedy described in the first paragraph of this warranty shall constitute the sole and exclusive remedy for breach of warranty, and the Company shall not be responsible for any incidental, special or consequential damages, including without limitation, lost profits or the cost of repairing or replacing other property which is damaged if this product does not work properly, other costs resulting from labor charges, delays, vandalism, negligence, fouling caused by foreign material, damage from adverse water conditions, chemical, or any other circumstances over which the Company has no control, including without limitation the use of incompatible chemicals and lubricants. This warranty shall be invalidated by any abuse, misuse, misapplication, improper installation or improper maintenance or alteration of the product, as well as any failure to install, operate or maintain the product in strict accordance and adherence with the product's operating documentation and manuals.

Some States do not allow limitations on how long an implied warranty lasts, and some States do not allow the exclusion or limitation of incidental or consequential damages. Therefore the above limitations may not apply to you. This Limited Warranty gives you specific legal rights, and you may have other rights that vary from State to State. You should consult applicable state laws to determine your rights. **SO FAR AS IS CONSISTENT WITH APPLICABLE STATE LAW, ANY IMPLIED WARRANTIES THAT MAY NOT BE DISCLAIMED, INCLUDING THE IMPLIED WARRANTIES OF MERCHANTABILITY AND FITNESS FOR A PARTICULAR PURPOSE, ARE LIMITED IN DURATION TO ONE YEAR FROM THE DATE OF ORIGINAL SHIPMENT.**



USA: T: (978) 689-6066 • Watts.com

Canada: T: (888) 208-8927 • Watts.ca

Latin America: T: (52) 55-4122-0138 • Watts.com